

CONFERENCE HIGHLIGHTS

Saturday, Lecture tracks on California records, record preservation and research methodology.



Vendors

Raffle Prizes

Questions?

Contact Cath Madden Trindle
at
CA Conference@aol.com
or
56 Orchard Ave
Redwood City, CA 94061-3720.



Crowne Plaza
1221 Chess Drive
Foster City, CA 94404
1-800-2-crowne
1-800-227-6963

A small block of hotel rooms are available Thursday - Sunday at a conference rate of \$85.00. Conference Booking Code is CGA.

Conference is sponsored by:
California State Genealogical Alliance, Livermore-Amador Genealogical Society, San Mateo County Genealogical Society, Contra Costa County Genealogical Society, Marin County Genealogical Society, Stanislaus County Genealogical Society, California Genealogical Society, Sacramento German Genealogical Society, Roots Cellar - Sacramento and NARA-Pacific Region.

Non-Profit Org.
U.S. Postage
PAID
San Mateo, CA
Permit #324

California Conference 2003
c/o Cath Madden Trindle
56 Orchard Ave
Redwood City, CA 94061-3720

CALIFORNIA CONFERENCE



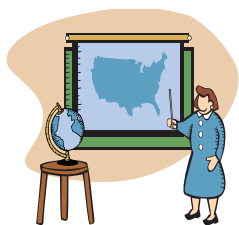
OCTOBER 18, 2003

**HOLIDAY INN
CROWNE PLAZA**

FOSTER CITY, CALIFORNIA

**BEFORE AND AFTER
FRIDAY AND SUNDAY**

Come explore the San Francisco Bay Area. Rich in history and culture. Enjoy the outdoors along the bay, at the ocean, or any of the many parks. Enjoy the indoors at the many libraries and museums. Take advantage of the many research facilities in the area. Many are open on Friday and Sunday.



Prefer a guided event? Special opportunities to visit select research venues in the Bay Area are being organized.

Friday: Attend a workshop on Cemetery research in the morning with an optional field trip to a cemetery in the afternoon.

California Genealogical Society Library across the bay in Oakland, California, open on Friday, easy access from BART.



National Archives and Record Administration, Pacific Region at San Bruno, CA. Open Monday through Friday for the general public will open on Sunday, 19 October 2003 for conference attendees only. Space is limited, hours to be announced.

A special lecture will be offered on Preservation of Family History Document: Issues and Methodology on Sunday, attendance limited.

Check Web Site for updates on conference sessions and workshops

http://users.lmi.net/catcn/ca_conf

Vendors

**SATURDAY, 18 OCTOBER
THE MAIN EVENT**

Raffle Prizes

9:30	Opening Remarks			
	California		Preservation	Methodology
Time	Track 1	Track2	Track3	Track4
9:45 - 10:45	<i>Original Archival Holdings related to Genealogy at NARA Pacific Region</i> Dan Nealand S1	<i>America Moves West: Nineteenth Century Westward Migration</i> Chuck Knuthson S2	<i>Oral Interviews</i> Martha Loeffler S3	<i>Census</i> Helen Crisman S4
11:00 - Noon	<i>CA Spanish Mission Records: Where are they? How to use them?</i> Sheila Prader S5	<i>Researching Ancestors on the Overland Trail to California</i> Carol March S6	<i>China Connection</i> Jeanne Low S7	<i>Evaluation of a Source</i> Sandra Shafer S8
12:15 - 1:30	Lunch Caroline Irwin <i>The Myth, Magic & Miracles of Family History</i>			
1:45 - 2:45	<i>Lists, Indexes and Special Collections: A researcher's boon</i> Cath Madden Trindle S9	<i>California Gold Rush</i> Chuck Knuthson S10	<i>Safe Computing and Genealogy</i> Cat Nielsen S11	<i>Ethnic Research 1880 - 1940</i> Rosemarie Capodici S12
3:00 - 4:00	<i>SF Passenger Lists and Naturalization at NARA</i> Rose Mary Kennedy S13	<i>California Mining Records: Locating Your Miner's Claim</i> Melinda Kashuba S14	<i>Vintage Ancestor Photo Identification</i> George Garrison S15	<i>Privacy and Copyright in the genealogical community</i> Cath Madden Trindle S16

Registration Deadline: 15 Sep 2003

Saturday - \$40.00 pre-registration/\$50.00 late registration
Saturday Lunch \$20.00