

FURNISHING PLAN

RECOMMENDED FURNISHINGS and WORKING DRAWINGS

Enlisted Men's Quarters

Each barracks casemate on the third tier at Fort Point was designed to house approximately 24 men. The population at the Fort varied from 55 to as many as 200 men, with around 100 men usually at the post. Regular infantry and artillery were stationed at the Fort during the period 1861 through 1868, and volunteer infantry joined the post in November 1864. Until the winter of 1864-65 the casemates were relatively uncrowded. Although it is not known which companies were quartered in each casemate, Company H, 3rd Artillery, has been chosen to represent a typical unit living in the quarters. Company H was posted at Fort Point from July 1863 through August 1865.

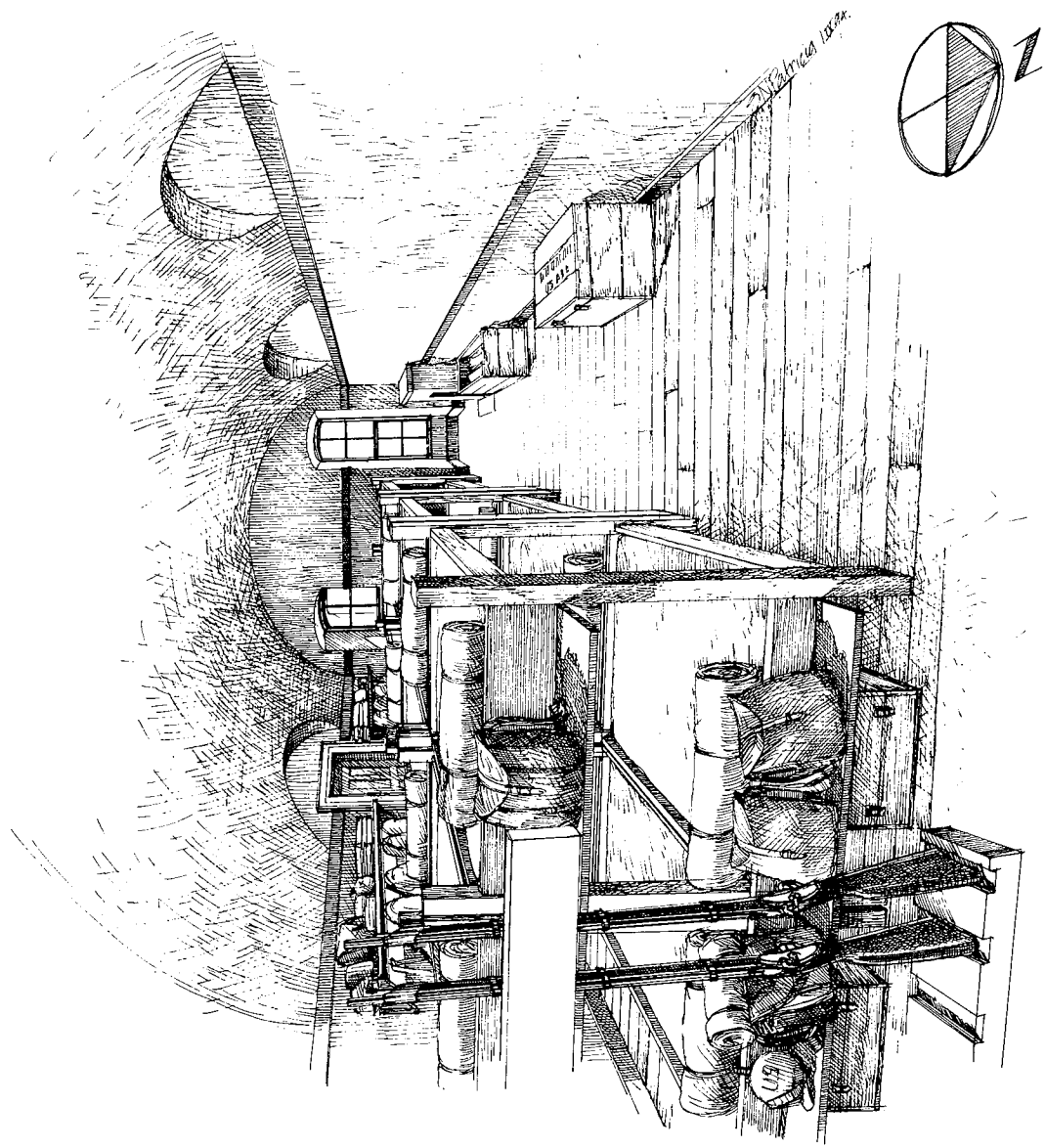
Recommendations for furnishings and their placement are based on those prescribed in the *Revised U.S. Army Regulations of 1861*. Coats, caps, and boots will not be shown in the quarters, as the men would usually be wearing these items. Only a few of the bunks will have great coats stored on the shelves, to illustrate the idea that the weather at Fort Point was often very cold and damp and men would need to wear their coats on guard or fatigue duty. In addition, wood boxes should be exhibited both summer and winter.

Rough wooden lockers will be placed near several of the bunks. Lockers were not standard issue items and it is possible that not every soldier had his own locker. It is not known whether lockers were used by the men at Fort Point, but it is likely that soldiers had some storage areas other than the bunk shelves and hook strip. One locker will be filled with various items of army-issued clothing and the few personal possessions a private might keep. These reproduction items can be used by interpreters to initiate discussion about soldiers' lives in the quarters. For instance, a German-English dictionary illustrates the fact that many recruits were not fluent in English when they joined the American army, and a newspaper presents an opportunity to discuss the function of the company fund.

All other furnishings will also be reproductions. The bunks will be copied from the one illustrated in figure 13. The quarters will appear neat and clean, as documented in inspection reports and the 1864 sanitary report.

Casemate 6 on the third tier will be furnished as the enlisted men's quarters. Visitors may enter the casemate from the gallery or from casemate 7 to the west. A barrier will block off the area immediately inside the gallery doorway.

Object and Location	Evidence	Recommendation
Enlisted Men's Quarters		
Two-tier DOUBLE BUNKS, 6, wooden (in two rows of three). See arrangement in figure 2	Totten to Tower, May 28, 1857, RG 77, in <i>HSR</i> , pp. 109-10; figures 11 and 13.	Reproduce; label with small white cards inscribed with soldiers' names.
BED SACKS, 12, double, cotton or linen canvas, straw-filled (on bunks)	<i>Revised Regulations of 1861</i> , p. 166; 1866 Quartermaster Reports Received, RG 393, figure 11; <i>These Relics of Barbarism</i> , p. 261.	Reproduce; replace straw with synthetic substitute to reduce decay and infestations.
BLANKETS, 24, wool, gray (on bunks)	<i>Revised Regulations of 1861</i> , p. 488.	Reproduce.
HOOK STRIP, wooden, 4 or 6 inches wide (on east wall)	<i>Fort Larned HFR</i> , p. 115. Men living in the casemates must have had a place to store accoutrements and clothing. The hook strip should not be installed until an architectural/structural investigation of the casemate walls has been completed.	Fabricate.
KNAPSACKS, 24, painted black (on shelves)	<i>Revised Regulations of 1861</i> , pp. 21-22.	Reproduce; mark regiment number in white on front cover and soldiers' name and company on inner side, stuff knapsacks so they appear packed.



Enlisted Men's Quarters

Object and Location	Evidence	Recommendation
Enlisted Men's Quarters		
GREAT COATS, 10, rolled and strapped (placed randomly on shelves and on bunks for use as pillows)	<i>Revised Regulations of 1861</i> , p. 21.	Reproduce.
HAVERSACKS, 24, painted canvas (on shelves)	<i>Revised Regulations of 1861</i> , pp. 23, 489.	Reproduce, mark number and name of regiment and letter of company on flap in black.
CANTEENS, 24, tin covered with woolen cloth (on hook strip)	<i>Revised Regulations of 1861</i> , pp. 23, 489.	Reproduce.
GUN RACK, to accommodate 24 guns, freestanding, wooden (on north wall between window and door)	"The Quarter Master must immediately prepare rough gun racks," R.C. Drum to Lt. Col. Merchant, February 18, 1861, RG 393.	Reproduce.
RIFLED MUSKETS, 18, .58 calibre (in gun racks). Not all rifles would be in the racks at once.	Inspection Report, August 8, 1867, RG 159; "[T]he arms will be placed in the arm-racks, the stoppers in the muzzles, the cocks let down, and the bayonets in their scabbards." <i>Revised Regulations of 1861</i> , p. 21.	Reproduce, possibly entirely from painted rubber or plastic.
ACCOUTERMENTS: 18 sets of Cartridge Box with Belt, Bayonet Scabbard and Bayonet, Waist Belt, black leather or black painted canvas (hanging on hook strip)	<i>Revised Regulations of 1861</i> , pp. 22, 397.	Reproduce.

Object and Location	Evidence	Recommendation
Enlisted Men's Quarters		
FUEL BOX with WOOD (north side of fireplace)	For heating casemate.	Reproduce.
TABLE, wooden (against south wall, between windows, near fireplace)	<i>Revised Regulations of 1861</i> , p. 162; figure 22; location beneath window provides extra light.	Reproduce.
NEWSPAPER, <i>The Daily Bulletin</i> (on table)	Company Fund Account, Company I, 9th Infantry, January-March 1863, RG 393.	Reproduce.
BENCHES, 4, wooden, (around table and on west wall)	<i>Revised Regulations of 1861</i> , p. 162.	Reproduce.
CANDLES, 2, adamantine, in wooden holders (one on table, one on bench)	Common practice; adamantine candles were used at Camp Wright near the Presidio (Provision Returns, 1861-62, RG 393). See candle holders in figure 7.	Reproduce.
LANTERN, oil (suspended from arch)	Common practice; the quartermaster's office provided oil for Fort Point (Commissary General's Office to Lt. Col. Swords, Feb. 18, 1861, RG 393).	Reproduce.
SPIT BOXES, 2, wooden (on floor near table)	Common practice.	Reproduce.
FIRE BUCKETS, 3, leather (two under southwest window, one east of door to gallery)	Figure 14.	Reproduce.

Object and Location	Evidence	Recommendation
Enlisted Men's Quarters		
LOCKERS, 8, wooden (placed randomly under bunk shelves and around room). The locker at the bunk closest to the barrier in the northwest corner will contain a soldier's possessions.	Common practice (see <i>These Relics of Barbarism</i> , pp. 302-03); figure 14.	Fabricate.
OVERCOAT, 1, (folded in locker)	Barry, Bell, Dillon and Kern inventories; <i>Revised Regulations of 1861</i> , p. 488.	Reproduce.
TROUSERS, 2 pairs (folded in locker)	Albert, Barry, Bell, Cook, Dillon and Kern inventories; <i>Revised Regulations of 1861</i> , p. 479.	Reproduce.
SHIRT, 1, flannel (in locker)	Albert, Barry, Cook, Dillon and Kern inventories; <i>Revised Regulations of 1861</i> , pp. 488, 170.	Reproduce.
DRAWERS, 2 pairs, flannel (in locker)	Albert, Barry, Cook, Dillon, Quinby, and Kern inventories; <i>Revised Regulations of 1861</i> , p. 170.	Reproduce.
SHOES, bootees, 1 pair (in locker)	Albert, Barry, Bell, and Kern inventories; <i>Revised Regulations of 1861</i> , p. 170.	Reproduce.
BOOTS, 1 pair (in locker)	Albert, Barry, Bell, Cook, Dillon, and Kern inventories.	Reproduce.

Object and Location	Evidence	Recommendation
Enlisted Men's Quarters		
STOCKINGS, 3 pairs (in locker)	Barry, Bell, Cook, Dillon and Kern inventories.	Reproduce.
TOWELS, 2 (in locker)	Albert, Kern inventories.	Reproduce.
SHAVING EQUIPMENT: Sheffield Razors, 2; Shaving Brush, 1; Soap Cup, 1; Strop, 1 (in locker)	Albert, Kern inventories.	Acquire.
MEERSCHAUM PIPE (in locker)	Albert, Bell inventories.	Acquire.
ENGLISH AND GERMAN DICTIONARY (in locker)	Albert inventory.	Acquire.
WATCH and CHAIN (in locker)	Bell, Kern inventories.	Acquire.
MITTENS, wool (in locker)	Cook inventory.	Reproduce.
HAIR BRUSH and COMB (in locker)	Kern inventory.	Acquire.
CLOTHES BRUSH and SHOE BRUSH (in locker)	Dillon, Kern inventories.	Acquire.

Noncommissioned Officers' Quarters

The arrangement of casemate 7 on the third tier is based on the 1856 plan (see figure 2). Four rooms, each roughly 11 feet by 6-1/2 feet were carved out of the casemate, allowing for an open space near the door and window which open onto the gallery. False walls will partition off the northern section of the casemate, creating a room in the northeast corner to demonstrate this arrangement. These walls will not be attached to the structure and will be moveable. The wall finish will simulate plaster over lathe.

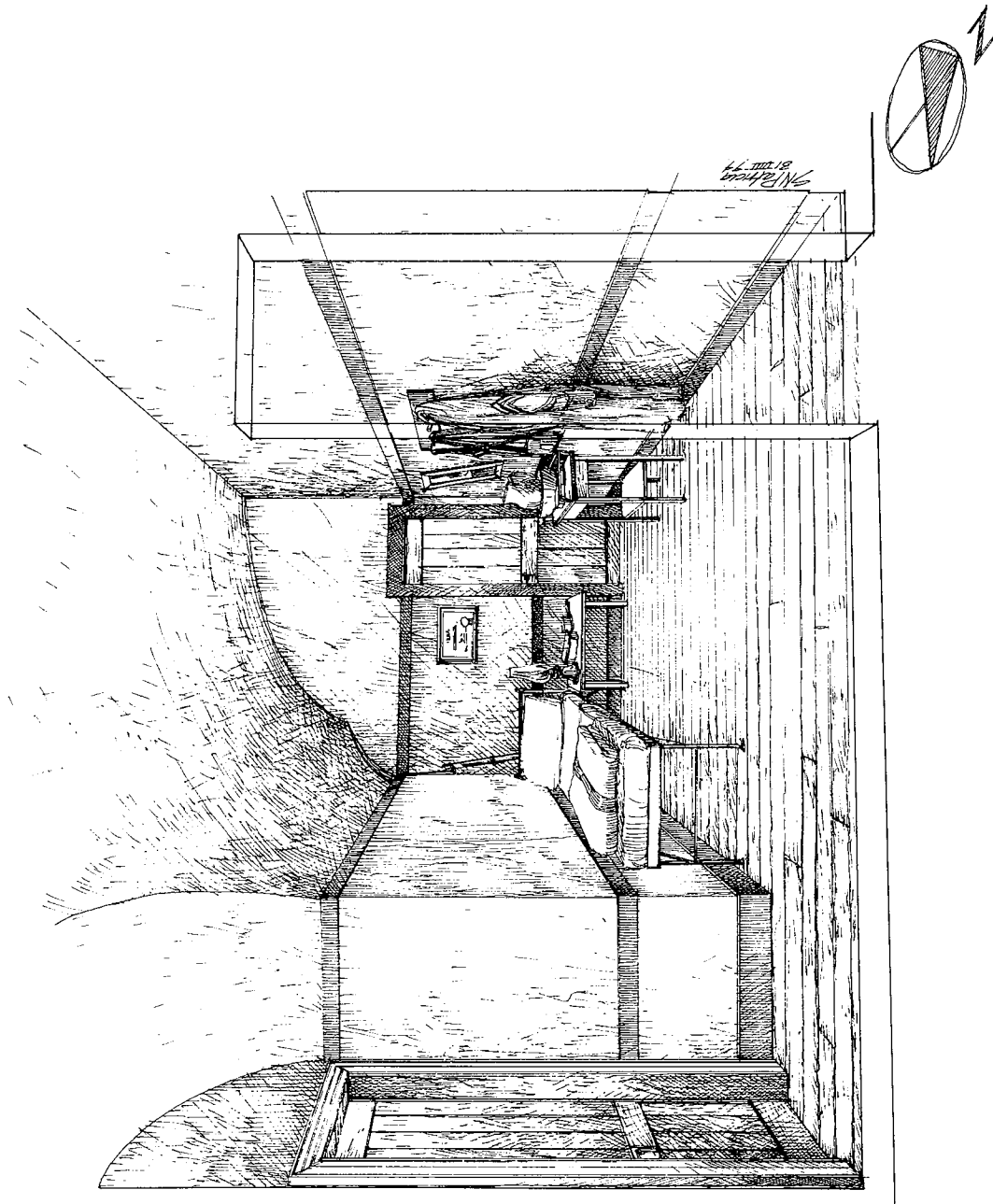
No direct evidence for furnishing noncommissioned officers' quarters at Fort Point has been located. The NCO's quarters will be furnished with a single bunk, perhaps a cot, and single bed sack, as well as a plain washstand holding shaving accessories. His framed parchment certificate of rank might hang on the wall. He would also have a rack for his rifle, and a shelf or hook to store his clothing.²⁷⁰

Some of the clothing exhibited in the noncommissioned officer's quarters will be drawn from a list of items lost in 1876-77 by Cpl. Joseph Buck in Wyoming Territory. Corporal Buck was with Company F, 9th Infantry; Company F was briefly stationed at Fort Point in the summer of 1867. The Buck inventory contains few items other than army-issued clothing; exceptions include a gold medallion with pictures of his father and mother, and his cleaning kit. An inventory for items lost by Cpl. James Caldwell while in Florida in 1861, also lists army issue clothing, as well as a locker, trunk, revolver, and "suit of citizen's clothes."²⁷¹

Visitors enter the noncommissioned officers' casemate directly from the enlisted men's quarters to the east or from the gallery. The quarters will be viewed from the passage-way within the casemate. The only fireplace in this casemate was in the southwest room; it is not known how the other rooms were heated. Because there was another set of quarters between this room and the window in the Fort's exterior wall, natural light will reach the furnished room only via the doorway to the interior, unfurnished room. Some light may also reach the room through the door to the enlisted men's casemate to the east.

²⁷⁰ NPS, *Historic Furnishing Study, Enlisted Men's Barracks...*, p. 141. Also *Revised Regulations of 1861*, p. 19.

²⁷¹ "Claims of Officers and enlisted men...for loss of private property...", pp. 42 and 44, NA, RG 92, Records of the Quartermaster General's Office.



Noncommissioned Officers' Quarters

Object and Location	Evidence	Recommendation
Noncommissioned Officers' Quarters		
SINGLE BUNK, iron, hospital-style (against west wall)	<i>These Relics of Barbarism</i> , p. 245.	Reproduce.
BED SACK, cotton or linen canvas, single, straw-filled (on bunk)	<i>Revised Regulations of 1861</i> , p. 166; 1866 Quartermaster Reports Received, RG 393.	Reproduce; replace straw with synthetic substitute to reduce decay and infestations.
BLANKET, 1, wool, gray (on bunk)	<i>Revised Regulations of 1861</i> , p. 488.	Reproduce.
TABLE (on east wall)	<i>Revised Regulations of 1861</i> , p. 162; figure 23.	Acquire.
MIRROR (hung on east wall above table)	Required for shaving.	Acquire.
SHAVING EQUIPMENT: Sheffield Razors, 2; Shaving Brush, 1; Soap Cup, 1; Strop, 1 (on table)	Albert, Kern inventories.	Acquire.
HOOK STRIP, wooden, 4 or 6 inches wide (on east wall)	<i>Fort Larned Historic Furnishings Report</i> , p. 115. Noncommissioned officers needed a place to store uniforms. The hook strip should not be installed until an architectural/ structural investigation of the casemate walls has been completed.	Fabricate.
OVERCOAT (hanging on hook strip)	<i>Revised Regulations of 1861</i> , pp. 486-89; Buck inventory.	Reproduce.

Object and Location	Evidence	Recommendation
Noncommissioned Officers' Quarters		
<p>ACCOUTERMENTS:</p> <p>One set of Cartridge Box with Belt; Bayonet Scabbard and Bayonet; Waist Belt, black leather or black painted canvas (hanging on hook strip)</p>	<p><i>Revised Regulations of 1861</i>, pp. 22, 397.</p>	<p>Reproduce.</p>
<p>RIFLED MUSKET, .58 calibre (leaning in southwest corner)</p>	<p>Inspection Report, August 8, 1867, RG 159; <i>Revised Regulations of 1861</i>, p. 21.</p>	<p>Reproduce, possibly entirely from rubber or plastic material.</p>
<p>FRAMED CERTIFICATE OF RANK, parchment (hanging on south wall)</p>	<p><i>Revised Regulations of 1861</i>, p. 19.</p>	<p>Reproduce.</p>
<p>BENCH, wooden (next to bunk)</p>	<p><i>Revised Regulations of 1861</i>, p. 162.</p>	<p>Reproduce.</p>
<p>CLOTHES BRUSH and SHOE BRUSH (on bench)</p>	<p>Buck, Dillon and Kern inventories.</p>	<p>Acquire.</p>
<p>LANTERN, oil (on bench)</p>	<p>To provide light in room without windows.</p>	<p>Acquire.</p>

Enlisted Men's Kitchen

The enlisted men's kitchen should appear clean and organized, as documented in reports of 1864 and 1866 inspections. The exact type of cook stove or range used in this room is not known. Stoves that were called "unserviceable" in an 1866 inspection report may have been new and useable during the war. Further physical investigation of this casemate should be undertaken before a decision about the type of stove used in this room is made. If a built-in brick range is used in the kitchen, the 1860 Barracks regulations (see Appendix F) provide the best plan on which to base a reproduction.

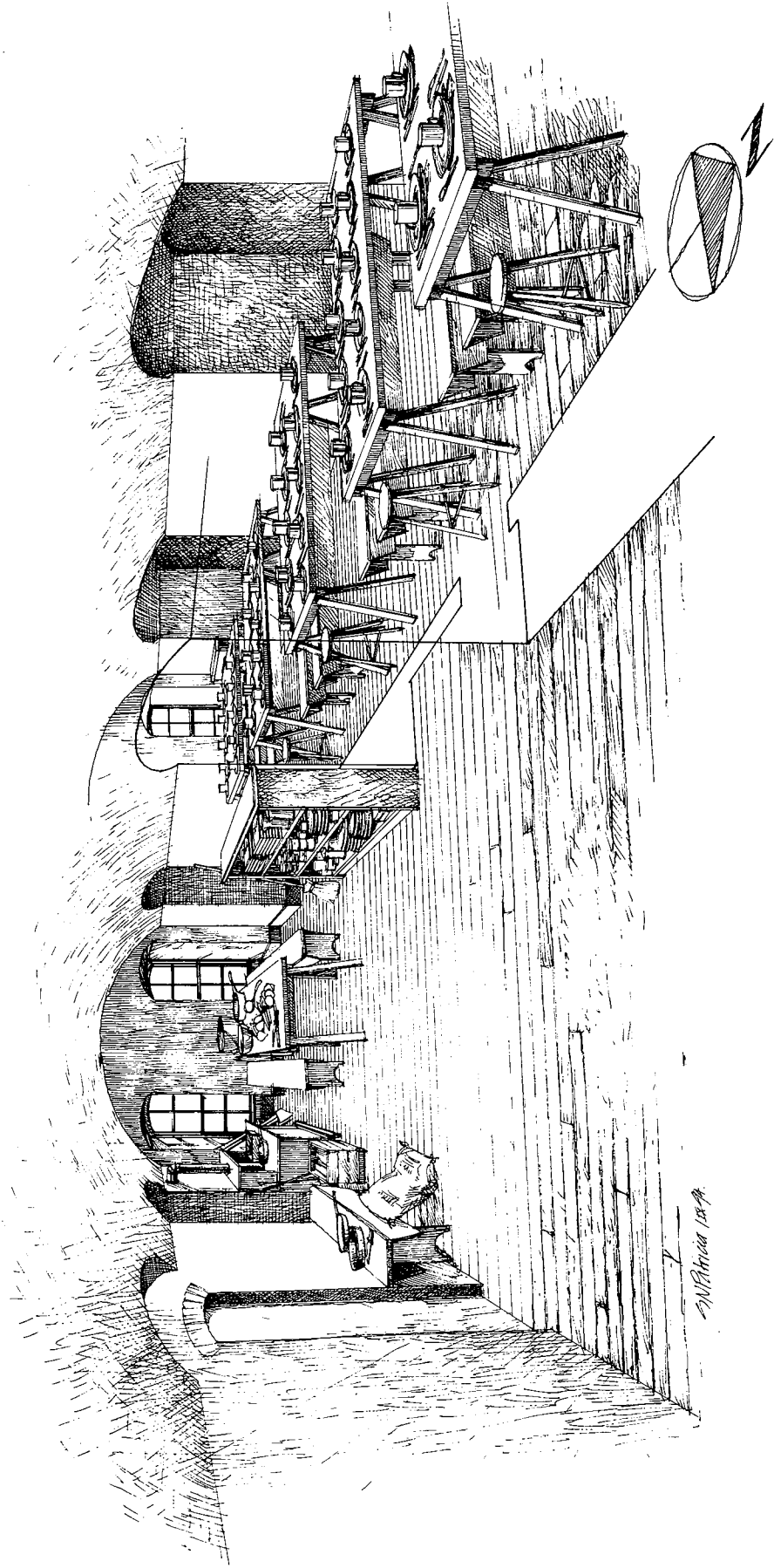
Some bulk food (probably stored in the storeroom adjacent to the kitchen) is exhibited in the kitchen along with vegetables purchased through the company fund.

Visitors enter the kitchen through the gallery door; a barrier permits visitors to pass through the door on their right to enter the mess hall.

Object and Location	Evidence	Recommendation
Enlisted Men's Kitchen		
COOKING STOVE; <u>or</u> RANGE, brick, built in (on east wall)	<i>These Relics of Barbarism</i> , p. 292 [plan in 1860 Barracks Regulations]; Inspection Report for Fort Point, January 1867, RG 159.	Fabricate or use existing reproduction stove in park collection.
FUEL BOX with WOOD (north of stove)	Stove accessory.	Fabricate.
POKER and ASH SHOVEL (next to fuel box)	For use with stove.	Acquire or reproduce.
TABLE, wooden (near south wall, between windows)	Figures 15, 16, and 23; <i>Revised Regulations of 1861</i> , p. 162.	Fabricate.
VEGETABLES: cabbage, carrots, onions, turnips (on table)	Company Fund Account, Company D, 3rd Artillery, February 1862, RG 393.	Reproduce.

Object and Location	Evidence	Recommendation
Enlisted Men's Kitchen		
KNIVES, 2 (on table)	For food preparation.	Acquire.
SOUP KETTLE (on table)	For food preparation.	Acquire or reproduce.
BENCHES, 3, wooden (two beside table, one on east wall)	To accommodate cooks and helpers; <i>Revised Regulations of 1861</i> , p. 162.	Fabricate.
KNIFE and PAN (on bench against east wall)	To use in food preparation.	Acquire.
SACK OF POTATOES (leaning against bench)	Potatoes were part of the ration in the Division of the Pacific, Provision Returns, 1861-62, RG 393.	Reproduce sack and acquire reproduction potatoes.
COOKING IMPLEMENTS: Square Pan; Kettles, 2; Iron Pots, 2; Meat Forks, 3; Ladles, 2 (on stove and table)	Figures 15 and 16; Inspection Report for Fort Point, January 1867, RG 159.	Reproduce.
SHELVES, wooden, freestanding, (against west wall between passage leading to mess and closet)	Storage area needed for kitchen equipment.	Fabricate.
MESS PANS, 24 (stacked on shelves)	Inspection Report for Fort Point, January 1867, RG 159.	Reproduce.
CANNED GOODS: tomatoes, peas, corn, milk (on shelves)	<i>The Army Called it Home</i> , p. 149.	Reproduce.

Object and Location	Evidence	Recommendation
Enlisted Men's Kitchen		
CAN OPENER (on shelves)	For food preparation.	Acquire or reproduce.
COFFEE POTS, 5, tin (on shelves)	Figure 15.	Acquire or reproduce.
BROOM (leaning against shelves, north side)	July 26, 1862, entry, Register of Requests for Money and Property, DoP, RG 393.	Reproduce.
LAMP, oil or candle (on table)	To light room; Barnitz inventory.	Reproduce.
WATER BARREL (northeast corner)	Fire safety precaution.	Reproduce.
AXES, 2, (southeast corner, near barrel)	Fire safety precaution; Monthly Return for Fort Point, Dec. 1866, RG 393.	Reproduce.



Enlisted Men's Kitchen and Mess

Enlisted Men's Mess

The enlisted men's mess hall was originally housed in the two casemates west of the kitchen on the third tier. This served upwards of 200 men at times; it probably accommodated only those men who were quartered in the Fort. Apparently, the rooms were planned to be joined by two passages: the first, near the gallery, still exists and the second was in the section that is now a closet between the two rooms. A label on the barrier will show the original plan for these rooms.

The barrier will block off roughly a quarter of the room. Only the casemate immediately west of the kitchen will be furnished as a mess. Visitors may enter from either the kitchen to the east or from the gallery.

Object and Location	Evidence	Recommendation
Enlisted Men's Mess		
TABLES, 5, wooden, approx. 6 ft. x 3 ft., to seat 10 men each (placed parallel to the entrance)	<i>Revised Regulations of 1861</i> , p. 162; figures 17 and 18.	Reproduce.
BENCHES, 10, wooden (on either side of each table)	<i>Revised Regulations of 1861</i> , p. 162; figure 17.	Reproduce.
MESS IMPLEMENTS, 50 sets, each set consisting of: Tin Cup, Plate, Knife, Fork and Spoon (on table, cup upside down on plate, between knife, fork and spoon)	Figure 19; Kern inventory.	Reproduce.
STOOLS, 2 (at ends of tables)	For NCOs use.	Reproduce.
SHELVES, freestanding (on east wall)	Figure 20.	Reproduce.

Object and Location	Evidence	Recommendation
Enlisted Men's Mess		
BOWLS, 48, ceramic, (on shelves)	Company Fund Account, Company D, Third Artillery, February 1862, RG 393.	Reproduce.
FUEL BOX with WOOD (north of fireplace)	Fireplace accessory.	Fabricate.
POKER and ASH SHOVEL (next to fuel box)	For use with fireplace.	Acquire or reproduce.
LANTERNS, 2 (suspended from ceiling or in metal wall sconces)	For lighting; figure 14 shows tin wall sconce.	Reproduce.

Officers' Kitchen and Dining Room

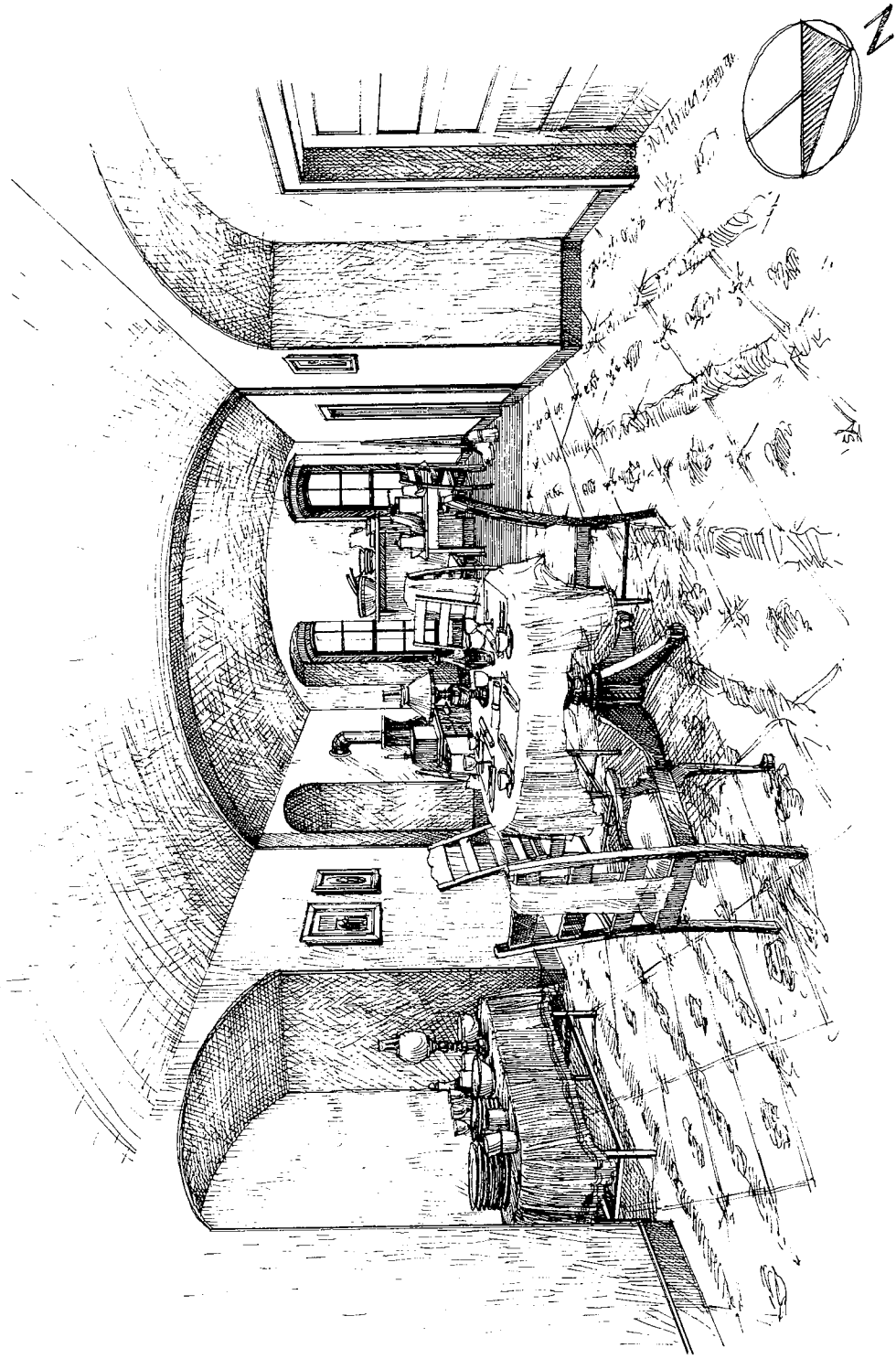
Located in the easternmost casemate on the second tier, the officers' kitchen occupied an 8 ft. x 16 ft. area in the rear of the casemate, according to the 1856 plan (see figure 2). The 1856 plan also depicts a closet planned for the area between the kitchen and the dining room, and an alcove in the dining room, adjacent to the closet. Access to the kitchen was through the storeroom near the east stairs. A false wall will partition this casemate, separating the officers' dining room and the kitchen. Visitors can view the kitchen through the door to the store room or from the entrance to the dining room. Note that there is no fireplace in the section of the casemate housing the dining room.

The officers' kitchen probably only served the bachelor officers who combined to form their own mess. Since it may have accommodated only three or four men, this kitchen was much smaller than the kitchen on the third tier, designed to serve hundreds of men at a time. However, because officers usually had more personal belongings than enlisted men, both the kitchen and the dining room contain more numerous and elaborate furnishings than the more utilitarian items found in the enlisted men's kitchen and mess above. Furnishings in the officers' kitchen and mess are based on inventories of the belongings of 2d Lt. D.G. Quinby, 5th Infantry; 2d Lt. René E. De Russy, 2nd Artillery; and Lt. W.L. Carpenter, 9th Infantry.

Object and Location	Evidence	Recommendation
Officer's Kitchen		
COOKING STOVE; <u>or</u> RANGE, brick, built in (on west wall)	1860 Barracks Regulations, p. 480 and plate XI; Inspection Report for Fort Point, January 1867, RG 159.	Fabricate or use existing reproduction stove in park collection.
CANDLE, in holder (on stove)	For lighting.	Reproduce.
FUEL BOX with WOOD (north of stove)	Stove accessory.	Fabricate.
POKER and ASH SHOVEL (next to fuel box)	For use with stove.	Acquire or reproduce.

Object and Location	Evidence	Recommendation
Officer's Kitchen		
TABLE, wooden (near west wall and window)	Figures 15, 16, and 23; <i>Revised Regulations of 1861</i> , p. 162.	Fabricate.
CHAIRS, 2, plain, wooden (on north and west side of table)	For use of civilian or enlisted hired cook; Carpenter inventory.	Acquire.
LAMP (on table)	Barnitz inventory.	Reproduce.
APRON (draped over chair)	For use of civilian or enlisted hired cook.	Reproduce.
KITCHEN IMPLEMENTS: Coffee Mill, Dipper, Strainer (on table)	Carpenter, Quinby inventories.	Acquire.
COFFEE POT, ceramic (on table, in preparation for serving coffee in the dining room)	Carpenter inventory (a "French" coffee pot); De Russy inventory (silver coffee pot).	Acquire.
COFFEE POT, tin (on stove)	Quinby inventory.	Acquire.
SACK of COFFEE BEANS (on table next to coffee mill)		Reproduce.
WASH BASIN (on table)	Quinby inventory.	Reproduce.
SHELF (on south wall between windows)	For storage.	Reproduce.

Object and Location	Evidence	Recommendation
Officer's Kitchen		
KITCHENWARE: Wooden Bowl; Small Cooking Tins, 4; Covered Dish; Water Pitcher; Knives, 2; Tin Canisters, 2; Bread Pans, 2; Dipper; Stew Pan; Dripping Pan (on shelf)	Quinby, Gross, and Barnitz inventories.	Reproduce or acquire.
MOP and BROOM (leaning in southwest corner)	Barnitz inventory.	Reproduce.



Officers' Kitchen and Dining Room

Object and Location	Evidence	Recommendation
Officers' Dining Room		
TABLE (in center of room)	Egbert, Barnitz inventories.	Acquire.
CHAIRS, 4, two straight-back, two arm chairs, not matching (around table)	Figure 9; Brennan inventory.	Acquire.
TABLE CLOTH (on table)	De Russy, Brennan, and Carpenter inventories.	Acquire.
NAPKINS, 3, (on table)	Carpenter, De Russy inventories.	Acquire.
NAPKIN RINGS, 3, silver (on table)	De Russy inventory.	Acquire.
EATING UTENSILS, silver-plated, 3 each of the following: Knives, Forks, Tea Spoons (on table)	Carpenter, De Russy inventories.	Acquire.
LAMP, oil (in center of table)	Carpenter inventory.	Acquire.
WINE GLASSES, 3, (on table, one at each place)	Carpenter, De Russy inventories.	Acquire.
CUPS and SAUCERS, 3 sets, ceramic (on table, one at each place)	Carpenter, De Russy inventories.	Acquire.
BOTTLE OF WINE (on table)	Figures 7 and 9.	Acquire.
SUGAR BOWL (on table)	Carpenter, De Russy inventories.	Acquire.

Object and Location	Evidence	Recommendation
Officers' Dining Room		
SASH, crimson silk (on table)	Crawford, Gifford, Jaeger, and Quinby inventories; <i>Revised Regulations of 1861</i> , p. 482.	Reproduce.
SIDEBOARD, plain (against south wall)	Figure 9.	Acquire.
TABLE COVER, dark fabric (over sideboard)	Figure 9; Brennan inventory.	Acquire.
CERAMIC DINNERWARE: Dinner Plates, 6; Soup Plates, 6; Cups and Saucers, 3; Vegetable Dishes, 2; Platters, 2 (stacked on sideboard)	Carpenter inventory.	Acquire.
LAMP (on sideboard)	Carpenter inventory.	Acquire or reproduce.
DECANTER, clear glass, half-filled and GOBLETS, 3 (on sideboard)	Figure 9; Carpenter inventory.	Acquire.
CARPET, ingrain, wall-to-wall (on floor)	Figure 7; Brennan, Egbert inventories.	Acquire reproduction.

Bachelor Officers' Quarters (Bedroom and Parlor)

The second casemate on the second tier was originally planned to contain one or two small bedrooms (see figures 2 and 9, and the 1860 plan), but engineers proposed modifying this arrangement to provide one large bedroom in the southern end of the casemate, adjoining a common parlor in the northern section. The adjacent casemate was partitioned into two bedrooms and also accommodated a privy for officers' families. False partitions will be used to separate the bedroom and the parlor in casemate 2. Visitors will enter only the section of the room adjacent to the gallery, and will view only the western section of the bedroom through the doorway.

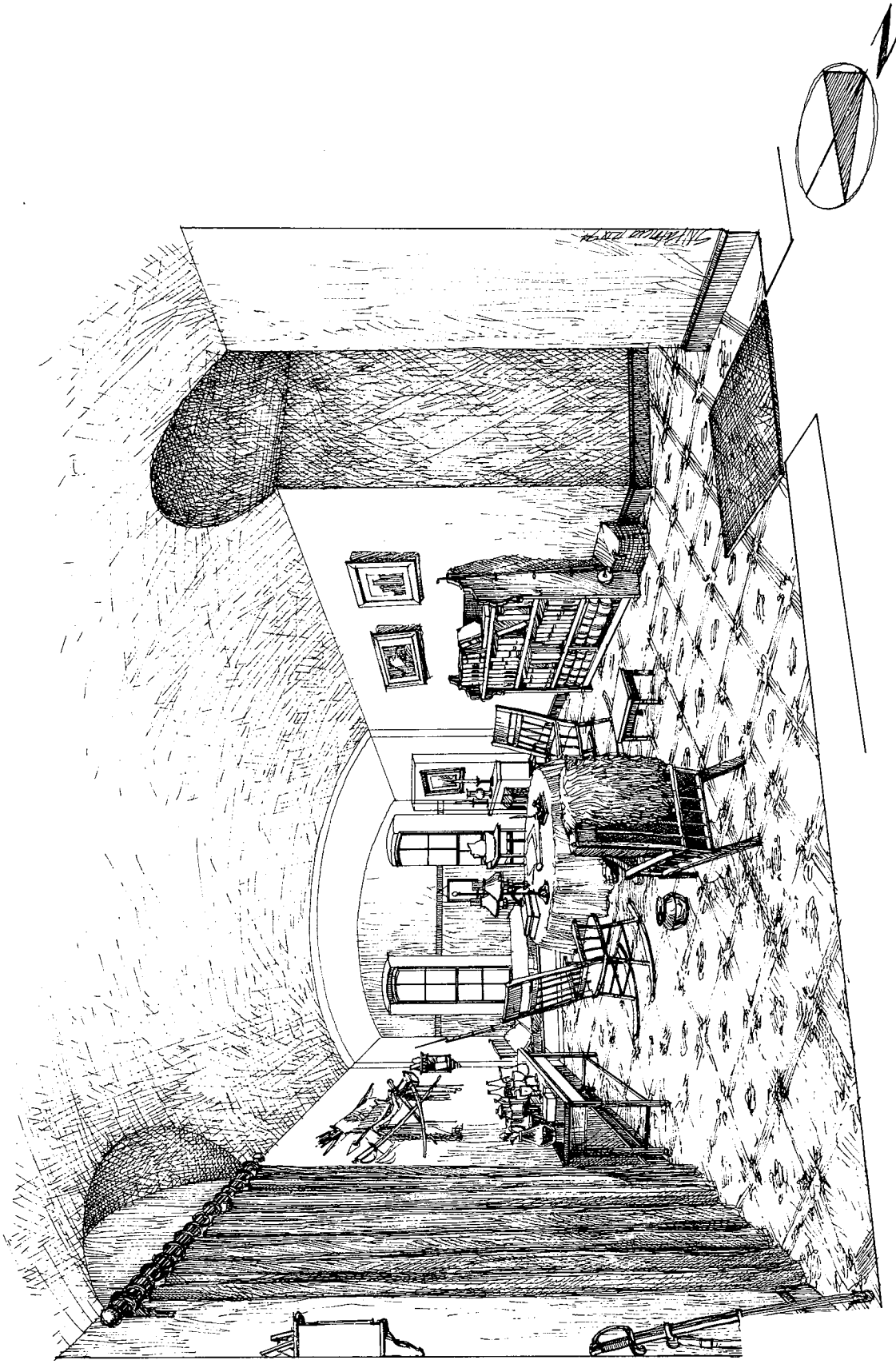
A generic bachelor officers' quarter will be furnished based on an 1861 drawing of officers' quarters at Fort Sumter (see figure 7); an 1867 *carte de visite* of Lt. Philip Reade in his quarters at Fort Dodge, Kansas (see figure 8), and inventories of contemporary officers. Figure 7 shows a single folding metal bunk, a covered center table, a side table exhibiting bottles and pitchers, and a patterned carpet on the floor. Figure 8 illustrates the officer's desk and a wall display made up of swords and sashes. This evidence is supplemented with inventories of officers' quarters at Forts Wallace, Leavenworth, and Larned in Kansas, as well as the 1868 property claim of 2d Lt. John Gifford and the 1874 claim of 2d Lt. George A. Jaeger.

The bachelor officer's quarters provide an opportunity for interpreters to discuss the way in which single officers combined their resources to mess together. Furnishings will be based on figures 7, 8, and 9, and on the inventories cited above in the plans for the bachelor officers' kitchen and dining room.

Object and Location	Evidence	Recommendation
Bachelor Officers' Bedroom		
BED, single, iron (between windows, perpendicular to south wall).	Figures 7 and 12.	Acquire or reproduce.
BEDDING: Mattress; Blankets, 2; Sheets, 2; Feather Pillow; Pillow Case (on bed)	Crawford inventory.	Reproduce.

Object and Location	Evidence	Recommendation
Bachelor Officers' Bedroom		
SLIPPERS (beneath bed)	Crawford, Iaeger inventories.	Reproduce.
SWORD and BELT (on bed)	Figure 7; Brennan, Crawford, Gifford, Iaeger and Quinby inventories.	Reproduce.
RIFLE, cal. 58, with bayonet (leaning against wall between bed and washstand)	Figure 7; Inspection Report, August 8, 1867, RG 159.	Reproduce.
WASHSTAND (in front of west window)	Figure 7; Gifford inventory.	Reproduce.
PITCHER and BOWL, blue and white ceramic (on washstand)	Figure 7; Gifford inventory, and evidence cited in Terrey and Pastron article in <i>The Hoff Store Site</i> .	Reproduce.
SHAVING MUG, BRUSH and RAZOR (on washstand)	Iaeger inventory.	Reproduce.
TOWEL (on washstand)	Iaeger inventory.	Reproduce.
CARPET, ingrain, wall-to-wall (on floor)	Figures 7 and 9; Egbert inventory.	Reproduce.
LOUVERED DOOR, painted (doorway between bedroom and parlor, hinged on west side of door frame and opening into parlor)	Figure 5.	Fabricate.
FUEL BOX with WOOD (north of fireplace)	Figure 7 shows fuel beside the fireplace, but no fuel box.	Reproduce.
GRATE, decorative (in fireplace)	Figure 7.	Reproduce.

Object and Location	Evidence	Recommendation
Bachelor Officers' Bedroom		
FENDER (outside fireplace)	Figure 7.	Reproduce.
CANDLESTICKS, with CANDLES (on fireplace mantel)	Figure 7 shows what appear to be simple blocks, perhaps of wood; Jaeger inventory lists three brass candlesticks. Reproduce simple period brass candlesticks.	Acquire candles.
PORTRAIT with gilded frame, print or photograph (on fireplace mantel)	Figure 7; also, Jaeger inventory: "1 oval picture frame, gilded, extra."	Fabricate.
ENGRAVING in gilded frame, colored (hanging over fireplace)	Subjects listed in the Jaeger inventory include: "Winter," "Evangeline," "the taking of the 'Malikoff'" and two unidentified "chromos"; see also framed picture in figure 9.	Fabricate.



Bachelor Officers' Quarters

Object and Location	Evidence	Recommendation
Bachelor Officers' Parlor		
TABLE, round (in center of room)	Figures 7 and 9.	Acquire.
TABLE COVER, patterned, blue and red (on table)	Iaeger, Brennan inventory; figures 7 and 9.	Acquire or reproduce.
BOOKS and PAPERS (on table)	Figures 7 and 9.	Acquire.
MEERSCHAUM PIPE (on table)	Figures 7 and 9; Iaeger inventory.	Acquire.
INKWELL, double, and QUILLS (on table)	Figures 7 and 9.	Acquire.
STUDENT LAMP, (on table)	Figure 9; Egbert inventory.	Acquire.
CORNER CABINET (hanging in southwest corner)	Figure 9; Iaeger inventory.	Acquire or fabricate.
PHOTOGRAPHS (on corner cabinet). Include three unmounted cabinet cards and one cabinet card mounted in easel-style frame.	Figure 9.	Acquire.
SIDE TABLE (against east wall).	Figures 7 and 9.	Acquire.
DECANTERS, 3, partially filled (on side table)	Figures 7 and 9.	Acquire.
LIQUOR BOTTLES, 8 (on side table)	Figures 7 and 9.	Acquire.
PITCHER, glass or metal (on side table)	Figure 7.	Acquire.

Object and Location	Evidence	Recommendation
Bachelor Officers' Parlor		
WINE GOBLETS, 6 (on side table)	Figure 9; De Russy, Carpenter inventories.	Acquire.
TOBACCO TIN or HUMIDOR (on side table)	Iaeger inventory.	Acquire.
Arrangement of SWORDS, BOWS and ARROWS (on wall over side table)	Figures 8 and 9.	Reproduce.
BOOKCASE (against west wall)	Egbert inventory lists a "panel-engraved" bookcase.	Fabricate.
PICTURES (hanging over bookcase)	Figure 9; see also figures 7.8, 7.10, 1.5, and 1.2 in <i>The Army Called It Home</i> .	
BOOKS (in bookcase). The selection might include a Bible, hymn books, song books, testaments, an encyclopedia, dictionary, books on civil and military law and tactics, "biographies of illustrious soldiers," books of instruction for commissioned officers, guide books, scientific texts, and West Point text books.	Dravo, Crawford, Egbert, De Russy, Gifford and Iaeger inventories.	Acquire.
PORTIERE, velvet, and hardware (installed in passage from parlor to officers' mess).	Figure 6. Portieres would help keep casemates warm.	Fabricate.

Object and Location	Evidence	Recommendation
Bachelor Officers' Parlor		
CORNER CABINET (hanging in northeast corner)	Figure 9; Iaeger inventory.	Acquire or fabricate.
PHOTOGRAPHS and NATURAL HISTORY SPECIMENS (on whatnot). Include unmounted cabinet cards and animal horn.	Figure 9.	Acquire.
SWORD in scabbard (leaning in corner, under hanging cabinet)	Figures 7 and 9; Crawford, Dravo, and Iaeger inventories.	Reproduce.
ROLLER SHADE, green (in gallery windows)	Figure 1; Brennan inventory.	Fabricate.
RUBBER DOOR MAT (inside door). Place mat within visitors' area; provides historical accuracy and a maintenance precaution.	Iaeger inventory.	Reproduce.
ROCKING CHAIRS, 2, wooden (one near table, one near bookcase)	Figures 7 and 9; Egbert and Dravo inventories. Egbert, stationed in California, described one rocking chair as made of "native wood, painted."	Acquire or reproduce.
FOOTSTOOL, plain, wooden (near rocking chair)	Figure 8.	Acquire or reproduce.
SPITTOON, brass (near chair)	Figure 8; Iaeger inventory.	Reproduce.
CHAIR, captain-style (near table)	Figure 8.	Acquire.

Object and Location	Evidence	Recommendation
Bachelor Officers' Parlor		
BUFFALO SKIN (draped over chair)	Figure 8; Carpenter inventory.	Acquire.
FISHING TACKLE BASKET, and RODS (leaning against wall)	Jaeger inventory. Men stationed at Fort Point probably fished for recreation. Captain George Andrews is known to have gone fishing. (See p. 31 of this report.)	Acquire.
CARPET, Brussels, wall-to-wall (on floor)	Figures 8 and 9; Egbert inventory.	Reproduce.

Married Officers' Quarters (Parlor, Kitchen, and Bedroom)

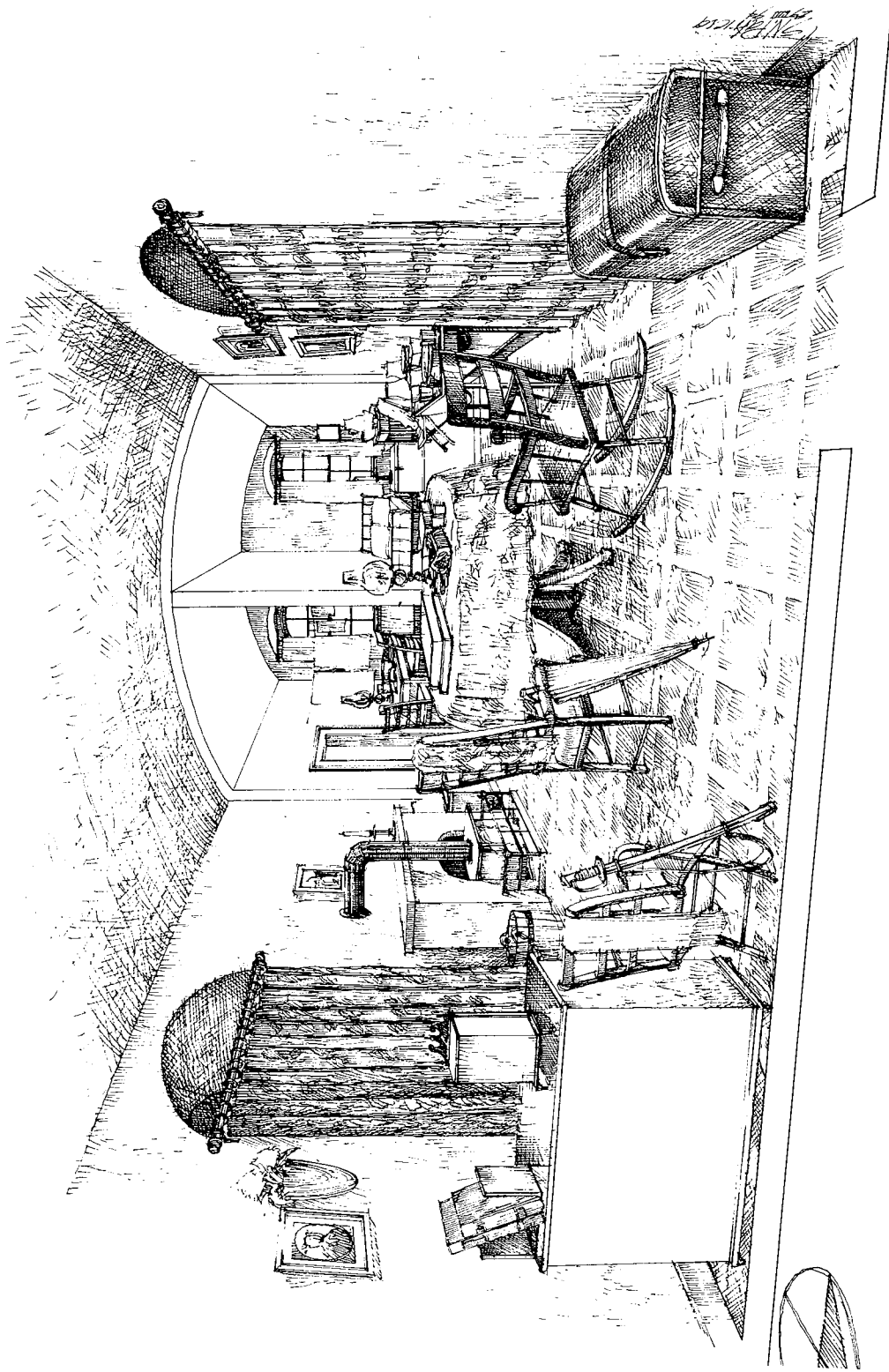
Furnishings for the officers' quarters interpreted at Fort Point will be based on two photographs of furnished casemate interiors documented to the 1860s, as well as other contemporary photographs and drawings of officers' quarters and their furnishings (see figures 5, 6, 7, 8, and 21.) These sources will be supplemented by inventories of officers' possessions found in the "Claims of Officers and Enlisted Men of the Army for loss of private property destroyed in the Military Service of the United States...prior to March 4, 1889" and appendixes to the *Historic Furnishings Report, Fort Larned National Historic Site*.

Information about specific officers and the families living with them at the Fort has not been located. Rather than guess which officer may have been living in the casemate quarters, a generalized interpretation of both married and bachelor quarters in the casemates will be presented.

Casemate 4 will be interpreted as quarters for a married officer. As shown in the 1856 plan of the Fort (see figure 2), partitions were planned in four casemates on the second tier to form two bedrooms on the south side and a parlor on the north side. To interpret this casemate as a suite of rooms, false partitions will again be installed. Visitors will view the casemate from the gallery, entering a section defined by barriers inside the doorway.

The doors to both rooms on the south side of the casemate will be open and sections of their interiors will be visible to visitors, but the main focus will be on the parlor. The doors are louvered, as shown in figure 5. The stove is in the fireplace in the parlor. Officers' families probably carried out most of their daily tasks in this front room and interpreters can use this area to discuss the crowded conditions in which officers and their families were often required to make a home.

The two smaller rooms south of the parlor will be furnished as a bedroom and a kitchen area. The kitchen, on the east side of the casemate, nearest the stove, will contain most of the items used in food preparation with the exception of the stove itself, which is in the parlor. A sideboard, located against the partition separating the parlor from the rear rooms, provides extra storage space for dishes and serving utensils.



Married Officers' Quarters

As noted above, no information has been located about officers' families living at Fort Point. Furnishings will be based on inventories of officers' possessions which include clothing and other items used by women and children, and on figure 5, which illustrates a furnished casemate at Fort Monroe, Virginia, during the Civil War. Selected detailed inventories used as evidence in planning the bachelors' quarters are also used as supplementary evidence in this section.

Married Officers' Bedroom

Object and Location	Evidence	Recommendation
Married Officers' Parlor		
TABLE, pedestal (in center of room)	Figure 5.	Acquire.
TABLE COVER, patterned (on table)	Figure 5; Gross inventory.	Reproduce.
LAMP, oil (on table)	Figure 5; Ayres, Gross, and Barrett inventories.	Acquire.
BOOKS, various (on table)	Figure 5; Gross, Ayres inventories.	Acquire.
HAND-SEWING MATERIALS: Thimble, Thread, Scissors, Bag (on table)	Gross inventory (thimble).	Acquire.
PHOTOGRAPH ALBUM, red plush (on table)	Gross inventory.	Acquire or reproduce.
STOVE (in fireplace)	Common practice; see also <i>The Army Called it Home</i> , p. 32.	Reproduce.
FUEL BOX with WOOD (north of stove)	Fireplace accessory.	Reproduce.
POKER and ASH SHOVEL (north of stove)	Fireplace accessory.	Acquire or reproduce.

Object and Location	Evidence	Recommendation
Married Officers' Parlor		
WATER BUCKET, wooden (near stove)	Barrett inventory.	Fabricate.
ROCKING CHAIR, polished or painted, wooden, woven seat (beside table)	Figure 5; Gross inventory.	Acquire.
CHAIR, straight back (beside table)	Figure 5.	Acquire.
SHAWL, woman's (draped over chair)	Figure 5; Gross inventory.	Reproduce.
PARASOL (leaning against chair)	Gross inventory.	Reproduce.
SIDEBOARD or SIDE TABLE with cover (against south wall, as shown in figure 9)	To accommodate tableware and glassware used in cooking.	Acquire.
PITCHERS, 2, ceramic (on sideboard)	Figure 7; De Russy, Barnitz, Quinby, and Gross inventories.	Acquire.
DISH, tin (on sideboard)	Gross inventory.	Acquire.
PLATES, BOWLS and CUPS, ceramic, from set (on sideboard)	Gross inventory.	Acquire.
BREAD PANS, 3 (on sideboard)	Gross inventory.	Acquire.
CARVING SET, ivory handled (on sideboard)	Gross inventory.	Acquire.
TEA SET, ceramic (on sideboard)	Egbert inventory.	Acquire.
NAPKINS, 12, folded (on sideboard)	Cavanaugh inventory.	Acquire.

Object and Location	Evidence	Recommendation
Married Officers' Parlor		
FRAMED PRINTS, 3 (on south wall above sideboard)	Barrett, Ayres inventories.	Acquire.
BOOKSHELF (west wall)	Egbert inventory.	Fabricate.
CLOCK (on top of bookshelf)	Bishop inventory.	Acquire.
BOOKS (on shelf). Books might include: <i>Mahan's Engineering,</i> <i>Jomini's Art of War,</i> <i>Halleck's Art of War,</i> <i>Halleck's International Law,</i> <i>Ladies' Repository,</i> <i>Godey's Ladies' Book,</i> a Bible and testaments.	Gross inventory.	Acquire.
MIRROR (on west wall, above bookcase)	Bishop inventory.	Acquire.
PORTIERE, patterned (in west casemate doorway)	Figure 5. Portieres might be used for warmth and to cover the door to the next casemate.	Fabricate.
LEATHER TRUNK (on north wall)	Gross, Bishop inventories.	Acquire.
PORTIERE, patterned (in east casemate doorway)	Figure 5.	Fabricate.
CURTAINS, wool (in window and in transom)	Figure 1; Egbert inventory: "5 curtains (stuff)."	Fabricate.
FOLDING CHAIR (near north window)	Gross inventory.	Acquire.

Object and Location	Evidence	Recommendation
Married Officers' Parlor		
SWORD and BELT (leaning against chair)	Figure 7; Brennan, Crawford, Gifford, Jaeger, and Quinby inventories.	Reproduce.
SASH, crimson silk (hanging on chair)	Crawford, Gifford, Jaeger, and Quinby inventories; <i>Revised Regulations of 1861</i> , p. 482.	Reproduce.
FRAMED PRINTS, 2, and WALL POCKET (on east wall south of doorway)	Ayres inventory: "Picture frames and hangings."	Acquire or fabricate.
CARPET, Brussels, wall- to-wall (on floor)	Figure 5; Ayres, Gross inventories.	Reproduce.

Married Officers' Kitchen

Only the section of this room visible to the visitor at the barrier in the casemate's gallery doorway will be furnished. The door, based on the one shown in figure 5, will be propped open to show the eastern part of the kitchen area.

Object and Location	Evidence	Recommendation
Married Officers' Kitchen		
TABLE, approx. 6 ft. long (against east wall)	Gross inventory.	Acquire.
LAMP, oil (on table)	Barrett inventory.	Acquire.
JELLY MOLDS (on table)	Gross inventory.	Acquire.
BLANCMANGE or CUSTARD INGREDIENTS: Sugar, Eggs, Milk (in ceramic pitcher), Paper of Gelatin, Cinnamon (on table)	<i>Young Housekeepers Friend</i> , p. 93. Milk pitcher in Quinby inventory.	Reproduce.
SIEVE or SIFTER, and CERAMIC TEACUP (on table)	<i>Young Housekeepers Friend</i> , p. 93. The teacup is used to measure the sugar.	Acquire.
COOKBOOK (open on table)	Carpenter inventory.	Acquire.
CHAIRS, 2 (at table)	Gross inventory: "4 common chairs."	Acquire.
TIN CUPS and PLATES, 4 each (stacked on table)	Gross inventory.	Acquire or reproduce.
CURTAINS, 2, brown (at window)	Iaeger inventory: "4 window-curtains, brown, 8 windows."	Fabricate.

Object and Location	Evidence	Recommendation
Married Officers' Kitchen		
CLOTHESLINE (tacked across southeast corner)	Figure 21.	Reproduce.
TOWELS, 2, and NAPKINS, 3 (hanging on clothesline)	Figure 21; Cavanaugh, Gross inventories.	Reproduce.
BROOM (leaning in southeast corner)	Jaeger inventory.	Reproduce.
FLOUR BARREL (in northeast corner)	Barrett inventory.	Reproduce.

Married Officers' Bedroom

The door to the bedroom will be open to show the room's furnishings. Visitors will see only the section of the room visible directly through the door.

Object and Location	Evidence	Recommendation
Married Officers' Bedroom		
BEDSTEAD, double, wooden or metal (on east wall, in southeast corner)	Cavanaugh inventory.	Use double iron bedstead at Harpers Ferry Center.
BEDDING: Mattress; Sheets, 2; Pillows, one pair; Pillowcases, one pair; Bolster; Bolster Case; White Blankets; Quilts, 2 (on bed)	Gross inventory.	Reproduce.
CHAMBER POT, ceramic (half-way under bed)	Gross inventory; evidence cited in Terrey & Pastron article in <i>The Hoff Store Site</i> .	Acquire.
LADIES' WRAPPER, flannel (on bed)	Gross inventory.	Reproduce.
TRUNK (at foot of bed)	Gross inventory.	Acquire.
WASHSTAND (facing west wall)	Ayres inventory: "Bedroom furniture"; Gifford inventory.	Acquire.
SHAVING SUPPLIES: Razors, 2; Strop; Mug and Brush; Towel (on washstand)	Gross inventory.	Acquire.

Object and Location	Evidence	Recommendation
Married Officers' Bedroom		
MIRROR (on south wall next to window)	Barrett inventory.	Acquire.
TRUNK, flat-top (under window)	Gross inventory.	Acquire.
CANDLESTICK, brass, with CANDLE (on trunk)	Jaeger inventory.	Acquire.
CHAIR, folding (on west wall next to washstand)	Gross inventory.	Acquire.
LADIES' DRESSES, 2, calico (draped over chair)	Gross inventory.	Reproduce.
LADIES' SHOES, one pair (next to chair)	Gross inventory.	Reproduce.
CARPET, ingrain, wall-to-wall (on floor)	Figure 5; Ayres, Egbert and Gross inventories.	Reproduce.

Hospital and Dispensary

Furnishings for the hospital and dispensary, housed in casemate 8, will be based largely on recommendations found in the 1861 *Hospital Steward's Manual*. The dispensary was located in the southernmost quarter of the casemate and moveable partitions should be installed in this casemate to divide the dispensary from the hospital. The 1856 plan shows two openings in the partition, one on the east side and one on the west. Visitors may enter the casemate through the gallery door or through the surgeon's office to the west and view the room from an area blocked off by barriers inside the gallery door.

Aside from the possible lack of shelves in the room, there is no evidence indicating the specific items in Fort Point's dispensary (see p. 60 for more on the dispensary). Furnishings planning will be based on objects listed in the 1861 *Hospital Steward's Manual*, and on the *Revised U.S. Army Regulations of 1861*. Furnishings in the dispensary will include a table, memorandum book, reproduction bottles and packaging for drugs, pestles and mortars, scales, and a feather duster.

The naturally low light levels in the dispensary should be maintained because they are historically accurate. A post surgeon in the 1880s maintained that the room was so dark he had difficulty putting up prescriptions "requiring exactness." While limited furnishings will be planned, the detailed functions of the dispensary should also be addressed through visitor services, wayside exhibits, or an exhibit in an adjacent casemate.

Furnishings in the Fort Point hospital will be based on those at Alcatraz Island, which were located within a brick bastion in a similar climate. A description of the Alcatraz hospital is included in the 1870 "Circular Number 4, Report on the Barracks and Hospitals of the United States Army." The wards at Alcatraz held ten beds and bedside tables, chairs, a dumb-waiter, a closet and a washstand and were heated with coal stoves.²⁷² The ward at Fort Point was smaller than the 35 x 26 x 17 feet available at Alcatraz; according to the 1856 floor plan, the hospital at Fort Point measured only 20 x 16 feet. Vaulted ceilings were 12 feet high. A privy was also recommended for the hospital casemate, and photographic evidence suggests it was installed.²⁷³ The recommended privy was to be located in a five-foot wide passage partitioned from the hospital casemate. If built as planned, the privy would have had two seats at the southern end of the passage way.²⁷⁴

²⁷² War Department, Surgeon General's Office, *Circular No. 4: Report on the Barracks and Hospitals of the U.S. Army with Descriptions of Military Posts* (Washington, DC: 1870, reprint, New York: Sol Lewis, 1874), p. 439.

²⁷³ A photograph of the fort's exterior (not reproduced in this report) shows soil pipes near the hospital windows.

²⁷⁴ J.F. Gilmer to De Russy, August 20, 1856, NA, RG 77, Letters Received, Chief Engineer, in *HSR*, p. 143.

Beds will be furnished with a bedsack, sheets, blankets, a coverlet, pillow and pillow case, and oil cloth. The hospital section will also contain a thermometer, fireplace accessories, bedstands, chairs, chamber pots, and spittoons. The hospital may also have had a chamber chair; alternatively, patients may have used the hospital privy, if it was built as planned.²⁷⁵

The hospital will include four beds, but only two will be fitted up for patients. The furnished hospital provides an opportunity not only to discuss medical care at the Fort, but also to discuss the relationship of the garrison at Fort Point with that at the Presidio. It is important to note that all seriously ill soldiers were transferred to the hospital at the Presidio during the Civil War and that at times Fort Point's hospital was closed.

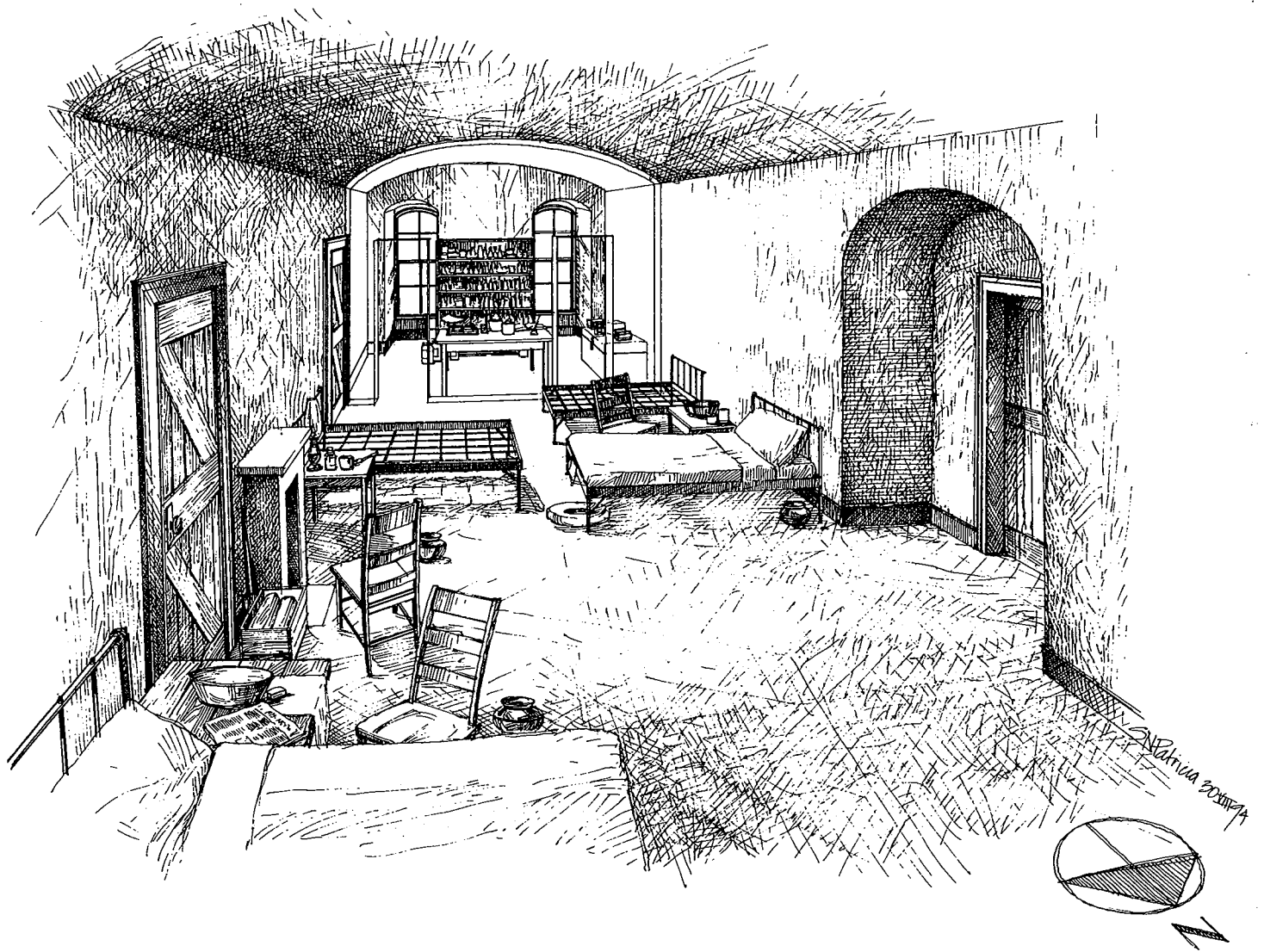
Hospital

Object and Location	Evidence	Recommendation
Hospital		
<p>HOSPITAL BEDS, 5, iron (three beds are perpendicular to the east wall and two are perpendicular to the west wall; they are at least 3 feet apart)</p> <p>Tickets are attached to each occupied bed, recording name, rank, company, disease and date of admission.</p>	<p><i>Revised Regulations of 1861</i>, p. 299; <i>Hospital Steward's Manual</i>, pp. 115, 119-20.</p>	<p>Reproduce.</p>

²⁷⁵ *Hospital Steward's Manual*, pp. 105-21.

Object and Location	Evidence	Recommendation
Hospital		
<p>BEDDING:</p> <p>Single Bed Sack; Wool Blankets, 2; Coverlet, white, woven; Sheets, 2; Pillow; Pillow Case; Gutta Percha Cloth (one set each for two beds).</p> <p>Only the two beds closest to the entrance will be furnished to reflect the fact that the hospital was usually not crowded.</p>	<p><i>Revised Regulations of 1861, p. 299; Hospital Steward's Manual, pp. 118-19.</i></p>	<p>Reproduce.</p>
<p>CHAIRS, 3 (one beside each occupied bed, one in front of fireplace)</p>	<p><i>Hospital Steward's Manual, p. 120.</i></p>	<p>Acquire.</p>
<p>FUEL BOX with WOOD (north of fireplace on east wall)</p>	<p>For use in fireplace.</p>	<p>Reproduce.</p>
<p>POKER and ASH SHOVEL (next to fuel box)</p>	<p>For use in fireplace.</p>	<p>Reproduce.</p>
<p>LANTERN, coal oil (suspended from the ceiling)</p>	<p><i>Hospital Steward's Manual, p. 109.</i></p>	<p>Acquire.</p>
<p>TABLES, 3 (two next to beds on east wall, one between two beds on west wall)</p>	<p><i>Hospital Steward's Manual, p. 120.</i></p>	<p>Acquire or reproduce.</p>
<p>MEDICINE, in bottle (on table on east wall)</p>	<p><i>Hospital Steward's Manual, p. 120.</i></p>	<p>Acquire or reproduce.</p>

Object and Location	Evidence	Recommendation
Hospital		
SPOON, tin (on table next to medicine)	To administer medicine.	Acquire or reproduce.
LAMP, oil (on table on east wall)	For lighting.	Acquire or reproduce.
NEWSPAPER, <i>The Daily Mail</i> , (on table on east wall)	Company fund account, Company I, 9th Infantry, January-March 1863, RG 393.	Reproduce.
TIN BASIN, SPONGE, TOWEL, and SOAP (on table on west wall)	<i>Hospital Steward's Manual</i> , p. 115.	Acquire or reproduce.
SPITTOONS, 3, ceramic or metal with porcelain surface (two beside occupied beds, one beside fireplace)	<i>Hospital Steward's Manual</i> , p. 120. See also Brown, <i>The Army Called it Home</i> , p. 181.	Reproduce.
CHAMBER POTS, 2, tin (beside occupied beds)	<i>Hospital Steward's Manual</i> , p. 120; Ferguson inventory.	Reproduce.
BROOM (leaning in northeast corner)	<i>Hospital Steward's Manual</i> , p. 121: "The floor of the ward should be constantly kept clean and neat, no litter or dirt being for a moment allowed upon it...."	Reproduce.
WINDOW SHADE, green (on gallery window)	As shown in figure 1.	Reproduce.



Hospital/Dispensary

Dispensary

Object and Location	Evidence	Recommendation
Dispensary		
SHELVES, one set, open (against south wall, across from west doorway)	<i>Hospital Steward's Manual</i> , p. 271.	Fabricate.
MEDICINES, approximately 175 types, stored in bottles and packages wrapped in paper (on shelves)	<i>Hospital Steward's Manual</i> , pp. 271-72; <i>Revised Regulations of 1861</i> , pp. 292-98.	Reproduce.
FEATHER DUSTER (on shelf)	<i>Hospital Steward's Manual</i> , p. 274.	Reproduce.
MEDICINES, in jars (on floor in front of shelves)	"...all medicines etc. are placed on the floor owing to the want of proper shelves." James E. Ord to Surgeon General, March 28, 1879.	Reproduce.
TRUNK, leather, flat-top, or wooden crate (against west wall)	To illustrate "the want of proper shelves."	Fabricate.
SPICES, such as arrowroot, cinnamon, and cloves (hospital stock) and BANDAGES (stacked on trunk/crate)	<i>Revised Regulations of 1861</i> , pp. 298-99.	Reproduce.
TABLE (in front of shelves)	<i>Hospital Steward's Manual</i> , p. 273.	Fabricate.
SCALES and WEIGHTS, apothecary (on table)	<i>Hospital Steward's Manual</i> , p. 273; <i>Revised Regulations of 1861</i> , p. 301.	Acquire.

Object and Location	Evidence	Recommendation
Dispensary		
PESTLES MORTARS PILL-TILES SPATULA (on table)	<i>Hospital Steward's Manual, p. 273;</i> <i>Revised Regulations of 1861, p. 301.</i>	Acquire.
MEMORANDUM BOOK and QUILL (on table)	<i>Revised Regulations of 1861, pp. 298, 301.</i>	Acquire.

Surgeon's Office and Steward's Room

The furnishings plan will be based on the 1856 plan, which places the steward's quarters in the east rear room and the matron's room in the west rear room. As discussed above, it is doubtful that any room in the Fort was actually used during the Civil War by a hospital matron and so the west room will not be furnished. Note that the only fireplace in this casemate is located in this room.

The surgeon's office will rely largely on furnishings prescribed in the *Hospital Steward's Manual*. No information on furnishings specific to the surgeon's office at Fort Point has been located. Furnishings for this room will include a desk and chairs, a bench along one wall, writing implements and stationery, and records such as the register of patients, prescription book, diet book, case book, meteorological register, requisitions, annual returns, order book, and a letter book.²⁷⁶ Medical books and journals will be stacked on a table or shelf.

The room planned as the surgeon's office is spacious enough to also have served as an examining room. An examining table, and some of the surgical instruments listed in the *Revised U.S. Army Regulations of 1861* for issue to all surgeons will be included in the office furnishings. Items found in an inventory of Acting Assistant Surgeon James Ferguson's belongings will also be included. (See p. 233.)

Furnishings for the steward's room will be based on evidence found in the *Hospital Steward's Manual* and the *Revised U.S. Army Regulations of 1861*. The room will contain simple bedroom furnishings for the steward, as well as knapsack storage. To illustrate the knapsack storage procedure discussed on pages 61-62, one packed and labeled knapsack will be exhibited on the shelf in the steward's room, and a second knapsack, along with a greatcoat, blanket, and soldier's arms, will be shown in the surgeon's office in the process of being recorded and packed.

The steward's bed will be a single iron bunk with regulation bedding; the room will also be furnished with a bedstand, washstand and accessories, a lamp, and a hook strip with a shelf. Because the single bunk did not have a shelf attached, the steward may have had a locker or trunk at the foot of his bunk. The steward's framed certificate of appointment hangs on the wall.

The steward's dress clothing will be stored in the room, as he would of course be wearing his fatigue uniform every day. The steward's fatigue uniform consisted of

...the blouse, or sack-coat, and trousers...the trousers are to have upon the outer seam of each leg a stripe of crimson worsted lace, one and one-half inch wide. It is advisable that the half chevron described for the full uniform of the hospital

²⁷⁶ Ibid., pp. 121-27.

steward should also be worn upon the undress coat...the undress cap is the regulation forage cap, similar to that of other enlisted men....

The steward's uniform coat hangs on a hook, as does his great coat and his sword. The uniform coat consisted of:

a dark-blue cloth single-breasted frock, the same as that prescribed by army regulations for all enlisted foot men; except that the cord of welt of cloth which edges the cuffs and collar is crimson, instead of being sky-blue as for infantry ... [the coat was decorated with a half chevron] of emerald-green cloth, one and three-fourths inches wide, running obliquely downward from the outer to the inner seam of the sleeve, and at an angle of about thirty degrees with a horizontal, parallel to and one-eighth of an inch distant from both the upper and lower edge, an embroidery of yellow silk one-eighth of an inch wide, and in the centre a 'caduceus' two inches long, embroidered also with yellow silk, the head toward the outer seam of the sleeve...on each shoulder of the uniform coat is worn a metallic scale, the same as worn by all noncommissioned officers and enlisted men....

The steward's sword was the same sword used by noncommissioned officers, and the hat, also stored on the shelf, was

black felt...the same as that of all enlisted men. The cord of buff and green mixed, the wreath in front of brass, with the letters U. S. in Roman, of white metal. Brim to be looped up to side of hat with a brass eagle, having a hook attached to the bottom to secure the brim. The feather to be worn on the side opposite the loop.

The remainder of the steward's dress uniform--including trousers, cravat, sash, sword belt and plate, and gloves--is stored in the locker and is not visible to the visitor.²⁷⁷

False walls will again be used to partition the surgeon's office from the two rear rooms. The doors will be based on the louvered doors illustrated in figure 5. The door to the steward's room will be open, while the door to the west room will remain closed. Visitors may pass into the surgeon's office from the hospital casemate to the west, and so will enter into the middle of the room. A barrier will stretch from the east doorway across to the west door, allowing access to the surgeon's office from the door opening onto the stairway. Approximately one half of the room will therefore be partitioned off for visitor use. Again, only that section of the steward's room visible from the visitor's area will be furnished.

²⁷⁷ Ibid., pp. 25-28.

Linen Closet. The closet adjacent to the southwest stairwell will be interpreted as the linen closet. A Lexan barrier will be installed over the entire doorway to protect the contents, while providing good visibility.

Object and Location	Evidence	Recommendation
Linen Closet		
SHEETS, 10 COVERLETS, 6 BLANKETS, 6 BED-SACKS, 3 PILLOWCASES, 6 SHIRTS, 6 DRAWERS, 6 SOCKS, 12 pairs (folded on shelves)	<i>Hospital Steward's Manual</i> , p. 133.	Reproduce.

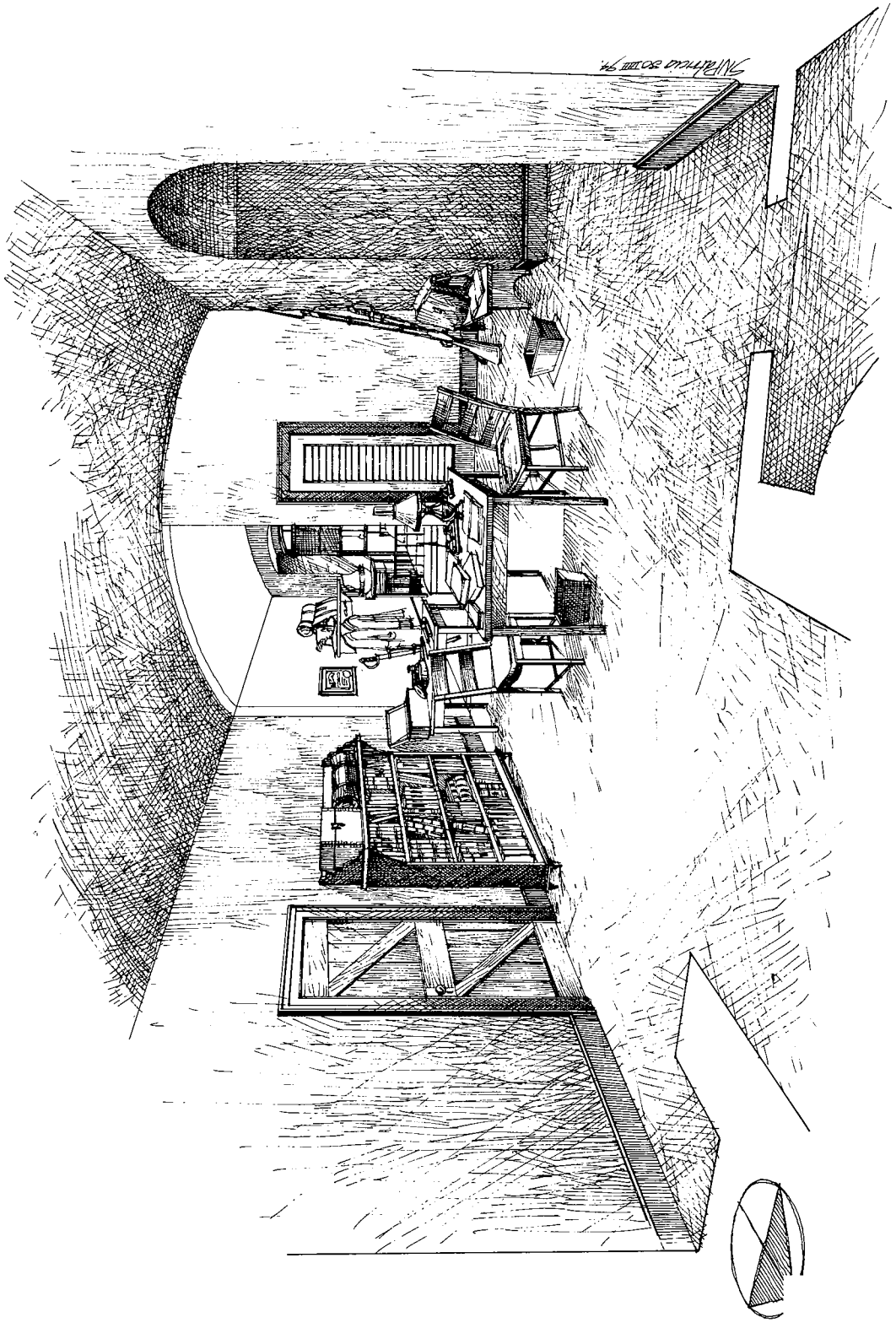
Surgeon's Office

Object and Location	Evidence	Recommendation
Surgeon's Office		
DESK and CHAIR, wooden (near west wall, facing center of room)	Necessary to accommodate paperwork done by surgeon and steward.	Acquire or reproduce.
RECORDS, including the following bound volumes: register of patients, prescription book, diet book, case book, meteorological register, order book and letter book, and unbound: requisitions, annual returns, and quarterly reports of sick and wounded (on desk)	<i>Hospital Steward's Manual</i> , p. 122.	Reproduce.

Object and Location	Evidence	Recommendation
Surgeon's Office		
<p>STATIONERY and OFFICE SUPPLIES:</p> <p>Writing paper, 1-1/2 quires; Envelopes, 15; Quills, 6; Wafers, 1/8 oz.; Sealing wax, 1 oz.; Ink powder; Office tape, 1/2 piece; Inkstand, 1; Stamp, 1; Paper-folder, 1; Sand-box, 1; Wafer-box, 1; Lead pencils, 3 (on table)</p>	<p>For use in completing required forms. <i>Revised Regulations of 1861</i>, p. 167.</p>	<p>Reproduce.</p>
<p>STUDENT LAMP, brass (on desk)</p>	<p><i>Revised Regulations of 1861</i>, p. 303; Egbert, Jaeger, and Quinby inventories.</p>	<p>Acquire or reproduce.</p>
<p>BENCH, wooden (on west wall)</p>	<p><i>Revised Regulations of 1861</i>, p. 162. Benches would be used by patients waiting to be examined.</p>	<p>Fabricate or reproduce.</p>
<p>KNAPSACK with GREATCOAT and BLANKET (on bench, in process of being recorded and packed)</p>	<p><i>Hospital Steward's Manual</i>, pp. 47-50.</p>	<p>Reproduce.</p>

Object and Location	Evidence	Recommendation
Surgeon's Office		
RIFLE, cal. 58, and SWORD IN SCABBARD (leaning against bench, in process of being recorded)	<i>Hospital Steward's Manual</i> , pp. 47-50; Inspection Report, August 8, 1867, RG 159.	Reproduce.
QUILL and LABEL (on bench)	To label packed knapsack.	Reproduce.
SPIT BOXES, 2, wooden (beside desk and bench)	Common practice.	Fabricate.
DOOR, louvered (in doorway between surgeon's office and servant's room)	Figure 5.	Fabricate.
BOOKSHELF (east wall)	<i>Revised Regulations of 1861</i> , p. 162.	Fabricate.
BOOKS, to include the following subjects: anatomy, chemistry, medical formulary, medical jurisprudence and toxicology, medical practice, obstetrics, and a medical dictionary (in bookshelf; some may be stacked on the desk)	<i>Revised Regulations of 1861</i> , p. 298.	Acquire or reproduce.
INSTRUMENT CASE, mahogany, closed (on top shelf of bookcase)	<i>Revised Regulations of 1861</i> , p. 302. To hold general operating instruments.	Acquire or reproduce.
INSTRUMENT CASE, Morocco leather, closed (on top shelf of bookcase)	<i>Revised Regulations of 1861</i> , p. 303. To hold surgical instruments.	Acquire or reproduce.
CHAIR (in center of room, facing desk)	For patients being examined.	Reproduce.

Object and Location	Evidence	Recommendation
Surgeon's Office		
TABLE (against south wall)	To hold medical instruments.	Acquire.
MEDICAL INSTRUMENTS: Vaccine Instrument, 1; Hypodermic Syringes, 2; Large Forehead Mirror with rest, 1; Laryngeal Mirrors with handles, 3; Brush and Sponge Holder for throat, 1 (on table)	Ferguson inventory. These instruments reflect documented diseases and treatments at Fort Point.	Acquire.



Surgeon's Office and Steward's Room

Steward's Room

Object and Location	Evidence	Recommendation
Steward's Room		
BUNK, single, iron (against west wall)	It is reasonable to assume that the steward was allowed to use one of the hospital-style single bunks.	Reproduce.
BED SACK, single, straw-filled (on bunk)	<i>Revised Regulations of 1861</i> , p. 166; 1866 Quartermaster Reports Received, RG 393.	Reproduce.
BLANKET, wool, gray (on bunk)	<i>Revised Regulations of 1861</i> , p. 488; 1866 Quartermaster Reports Received, RG 393.	Reproduce.
TRUNK, leather (at foot of bunk)	Caldwell inventory; needed for storage.	Acquire or reproduce.
ROLLER SHADE, green (on window)	Common window covering.	Reproduce.
WASHSTAND (against south wall, in front of window)	It is reasonable to assume that the steward would have access to hospital furnishings, or would have furnishings made at the post.	Acquire or reproduce.
BASIN and PITCHER, ceramic (on washstand)	Gifford and Jaeger inventories; evidence presented in Terrey and Pastron article in <i>The Hoff Store Site</i> .	Acquire.
RAZOR and STROP (on washstand)	Albert, Kern inventories.	Acquire.
BEDSTAND, (against south wall, between washstand and bed)	<i>Revised Regulations of 1861</i> , p. 299.	Reproduce.

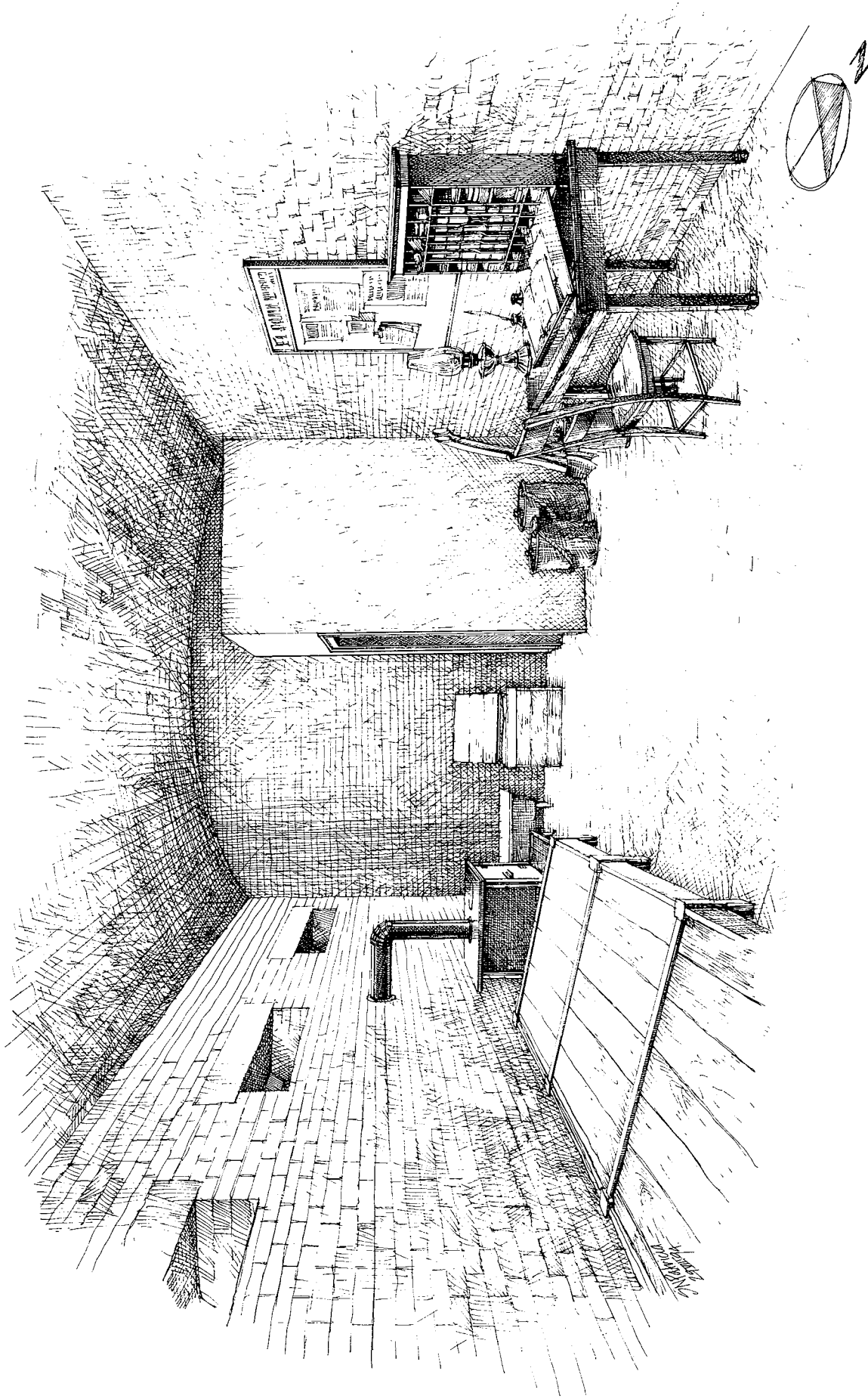
Object and Location	Evidence	Recommendation
Steward's Room		
LAMP, kerosene, candle or oil (on bedstand)	For lighting the room.	Acquire or reproduce.
NEWSPAPER, <i>The Daily Mail</i> (on bedstand)	Company Fund Account, company I, 9th Infantry, January-March 1863, RG 393.	Reproduce.
MEERSCHAUM PIPE (on bedstand)	Albert, Bell inventories.	Acquire.
Steward's CERTIFICATE OF APPOINTMENT, framed (on east wall)	<i>Hospital Steward's Manual</i> , pp. 22-23.	Reproduce.
HOOK STRIP with SHELF (on east wall)	For storage.	Fabricate.
HAT, black felt (on shelf)	<i>Hospital Steward's Manual</i> , pp. 22-23.	Reproduce.
KNAPSACK, labeled and packed, with coat and blanket strapped on (on shelf)	<i>Hospital Steward's Manual</i> , p. 48.	Reproduce.
Steward's DRESS UNIFORM COAT (on hook)	<i>Hospital Steward's Manual</i> , pp. 22-23.	Reproduce.
Steward's SWORD IN SCABBARD (leaning on east wall beneath hook strip)	<i>Hospital Steward's Manual</i> , pp. 22-23.	Reproduce.

Guard Room

The guard room is located directly west of the sallyport, protecting the only entrance to the Fort. Guard room furnishings were sparse, and included no personal items. The furnishings plan is based largely on the discussion of guard room furnishings found in David A. Clary's, *These Relics of Barbarism: A History of Furniture in Barracks and Guardhouses of the United States Army, 1800-1880*. Little direct evidence about guard room furnishings at Fort Point has survived. A simple desk and chair are placed in the room to illustrate the record-keeping responsibilities of the sergeant-of-the-guard and the officer-of-the-guard. It is not known where the office for the officer-of-the-day was located, nor where any of the Fort's other administrative spaces were located.

Visitors may enter the guard room either through the sallyport or through the doorway to the parade. A barrier blocks off the northern section of the room for visitor use.

Object and Location	Evidence	Recommendation
Guard Room		
BENCHES, 2, wide enough for resting or sitting (against east and west walls)	<i>These Relics of Barbarism</i> , p. 309.	Reproduce.
GUN RACKS, wooden, free standing; to accommodate 24 guns (near north wall)	"The Quartermaster must immediately prepare rough gun racks," R.C. Drum to Lt. Col. Merchant, February 18, 1861, RG 393; <i>These Relics of Barbarism</i> , p. 309. As many as 23 men might comprise the guard. [Regimental Record Books, Eighth California Volunteers, RG 94].	Reproduce.
TABLE and CHAIR (in center of room, facing north entrance)	<i>These Relics of Barbarism</i> , p. 309.	Reproduce.



Guard Room

Object and Location	Evidence	Recommendation
Guard Room		
TRAVELLING DESK (on table)	Figure 8.	Reproduce.
MANUAL, <i>Revised Regulations of 1861</i> (on table)	For use by officer-of-the-day.	Reproduce.
STATIONERY and OFFICE SUPPLIES: quill, writing paper, sealing wax, office tape, inkstand, pencil, guard roster (on table)	For use in completing required forms. <i>Revised Regulations of 1861</i> , p. 167.	Reproduce.
NOTICE BOARD (hanging on west wall)	Common practice.	Reproduce.
DAILY ORDERS (on notice board)	Common practice.	Reproduce.
STOVE (on east wall)	"the fuel for the [guard room] has been scantily supplied by pieces of wreck gathered on the shore by the guard...." W. Austine to F. Swords, August 2, 1861, RG 393, Letters Received by DoP.	Reproduce.
FUEL BOX with WOOD (north of stove)	Stove accessory.	Reproduce.
FIRE BUCKETS, 3, leather (west wall)	Part of fire fighting equipment. The guard was the first line of defense against fire. <i>These Relics of Barbarism</i> , p. 309. See figure 14.	Reproduce.

Object and Location	Evidence	Recommendation
Guard Room		
<p>AXES, 2 (leaning against southwest corner)</p>	<p>Part of fire fighting equipment. The guard was the first line of defense against fire. <i>These Relics of Barbarism</i>, p. 309.</p>	<p>Reproduce.</p>
<p>LANTERN, oil, with glass globe (on table)</p>	<p>Commissary General to Lt. Col. Swords, February 18, 1861, RG 393, Letters Sent by DoP. Michael Commins to Secretary of War, June 14, 1863, RG 393, Letters Received by DoP.</p>	<p>Acquire or reproduce.</p>

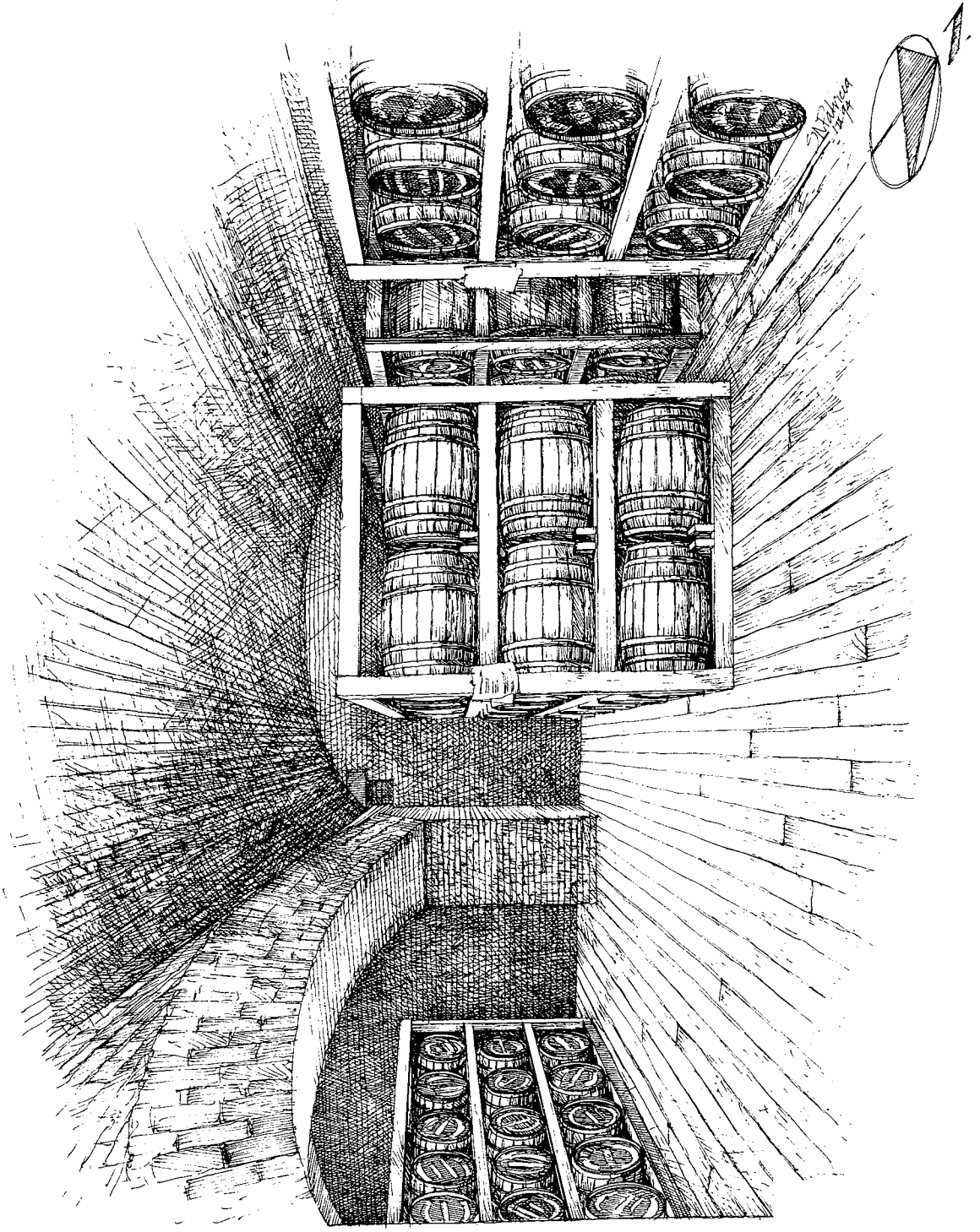
Powder and Service Magazines

Furnishings in the main magazine rely largely on recommendations found in John Gibbon's, *The Artillerist's Manual* (1860). Little is known about the main magazines at Fort Point, other than the fact that they were well-maintained. Lighting should be kept at a low level in this room, to reflect the fact that the only light source was at the doorway. The white labeling on the black-painted ends of barrels makes the marks more visible in the dark magazine.

Magazine B is furnished, while magazine A, located between the guard room and magazine B, will be used as exhibit space. All furnishings are reproductions, and because visitors may move freely through these casemates, the barrels are secured to the racks or skids.

Implements such as cartridges, bags, and fuzes will be exhibited in the future in a furnished service magazine. Selection of a service magazine for furnishing is pending management decisions relating to accessibility, ordnance placement, and interpretive media development.

Object and Location	Evidence	Recommendation
Powder Magazine		
<p>RACKS, 2, with three tiers, nine feet long, for powder barrels. (in center of room perpendicular to gallery, leaving open space between brick piers for use of interpreters. The west rack near the door is at least six feet away from the doorway.)</p> <p><u>OR</u></p> <p>Use skids on floor and between tiers of barrels.</p>	<p><i>The Artillerist's Manual</i>, pp. 44-45.</p>	<p>Modify racks in park collection. Fabricate skids if used.</p>



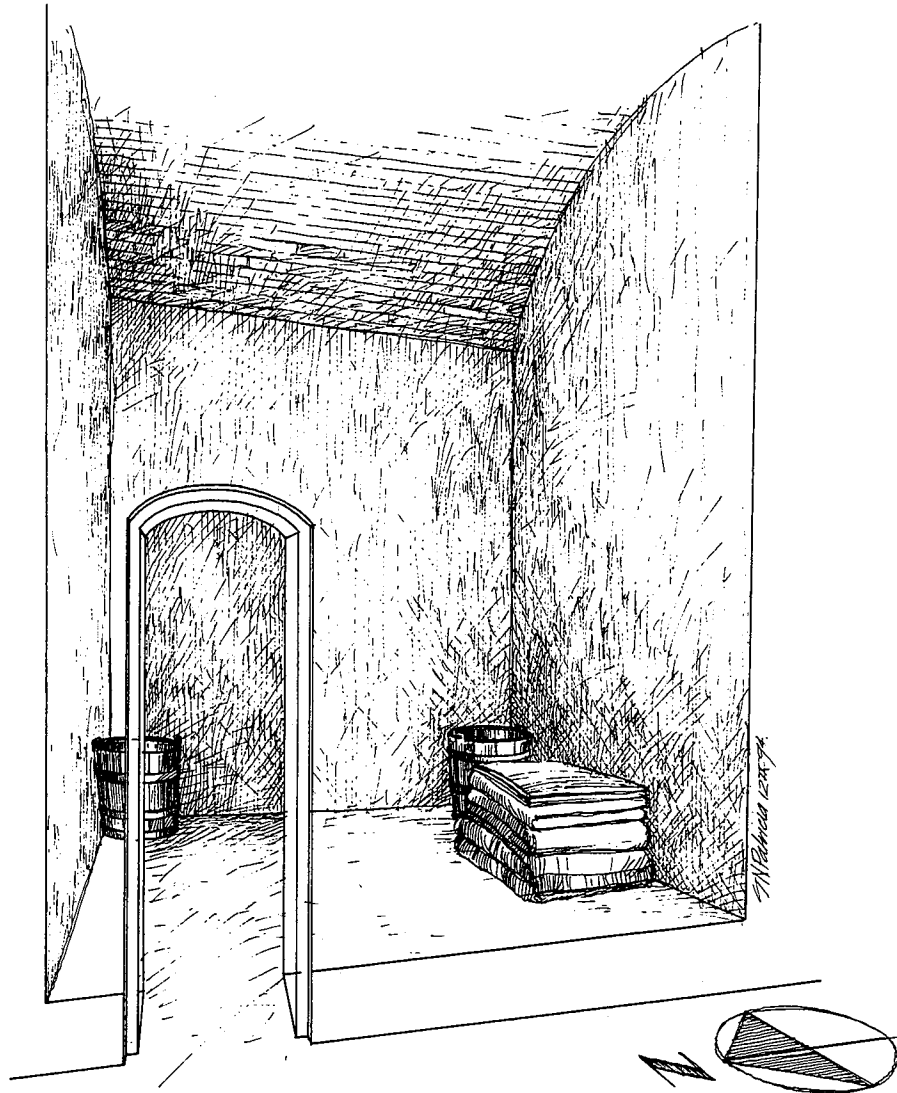
Powder Magazine

Object and Location	Evidence	Recommendation
Powder Magazine		
<p>BARRELS, approx. 100, white oak with copper or cedar hoops, weighing 100 lbs. each, measuring 20-1/2 in. long and 16 in. diameter at widest part (on racks).</p> <p>Ends of barrels painted black, with white stenciling indicating number, place and year of manufacture, type of grain, year proved, and proof range. Other marks record trial dates and velocity.</p>	<p><i>The Artillerist's Manual</i>, p. 20; <i>Ordnance Manual 1862</i>, pp. 240-44.</p>	<p>Reproduce.</p>
<p>CHOCKS, 50 (placed randomly on bottom tiers of powder to steady piles)</p>	<p><i>The Artillerist's Manual</i>, pp. 44-45.</p>	<p>Fabricate.</p>
<p>TICKETS, forms, 6 (attached to each pile, to record entries and issues)</p>	<p><i>The Artillerist's Manual</i>, pp. 44-45.</p>	<p>Fabricate.</p>
<p>BOX filled with WHITE POWDER to represent chloride of lime (suspended from arch in center of room)</p>	<p><i>The Artillerist's Manual</i>, p. 45.</p>	<p>Fabricate.</p>
<p>LAMP, in glass enclosure (on shelf installed on top of doorway)</p>		<p>Fabricate or omit.</p>

Jail Cell

The casemate directly east of the sallyport is divided into three jail cells. Access to the cells is through a passage that runs from the gallery entrance to the south wall of the gorge. The cell nearest the gallery will be exhibited because it contains original graffiti on the south wall. The section of wall bearing the graffiti will be stabilized, and the cell sparsely furnished with a slop bucket and blankets. A waist-high barrier will block the entrance to the door; alternatively, the door could be completely sealed with Lexan to further protect the wall finish.

Object and Location	Evidence	Recommendation
Jail Cell		
SLOP BUCKETS, 2 (in northeast and southeast corners)	<i>These Relics of Barbarism</i> , p. 308.	Reproduce.
BLANKETS, 4, gray wool (on floor)	For keeping warm and sleeping. Prior to the winter of 1864-65, there were usually no more than 12 prisoners divided among the three cells.	Reproduce.



Jail Cell